



Model: EMT6160Z
Code: 513300162

embraco POWER IN.
CHANGE ON

Type:	On-off
Voltage [V] / Frequency [Hz] / Phases	220-240 V 50 Hz 1 ~
Refrigerant:	R-134a
Application:	HBP

Motor type:	CSIR
Starting torque:	HST
HP:	1
Displacement:	6.99 cm ³

OPERATING CONDITION : ARI HBP

Evaporation Temp.	7.2 °C	Return Temp.	18.3 °C	Superheating	11.1 K
Condensing Temp.	54.4 °C	Liquid Temp.	54.4 °C	Subcooling	0.0 K

Cooling capacity	Power consumption	Mass flow rate	Efficiency
647.74 W	324.21 W	17.34 kg/h	2.00 W/W

APPLICATION

Evaporating temperature range:	-15 to 10 °C	Cooling type:	Fan Cooling
Permanent operating temperature (peak) :	60 (70) °C	Air Flow	--
Expansion device:	Capillary tube or Expansion valve	Maximum motor temperature:	130 °C

ELECTRICAL DATA

Start winding resistance at 25°C (77°F):	0 Ω +/- 8%	Run winding resistance at 25°C (77°F):	0 Ω +/- 8%
FLA - full load amperage L/MBP [A] 50 Hz / 60 Hz:	- / -	LRA (A) 50 Hz / 60 Hz:	9.8 / -
		FLA - full load amperage HBP [A] 50 Hz / 60 Hz:	- / -

MECHANICAL DATA

Bore:	22.5 mm	Stroke:	8.8 mm
		Displacement:	6.99 cm ³

OTHER INFORMATION

Weight:	8.1 kg	Oil charge:	180 ml
Lubricant type:	Polyolester ISO22	Nitrogen charge:	No

EXTERNAL SETTINGS

	Shape	Material	Diameter [mm]
Suction connector	Slanted 40° up + 45° to Back	Copper	6.20
Discharge connector	Slanted 0° up + 24° to Back	Copper	4.90
Process connector	Slanted 40° up + 45° to Back	Copper	6.20
Base plate:	European Standard EUEM	Tray holder:	Yes

PERFORMANCES AT STANDARD CHECK-POINTS

Checkpoint	Cooling capacity	Power consumption	Gas flow rate	Cooling Efficiency	Heating capacity +/-	Heating Efficiency
	+/-5% W	+/-5% W	+/-5% kg/h	+/- 7% W/W	5% * W	+/- 7% W/W
ARI HBP	647.74	324.21	17.34	2.00	792.38	2.44
ARI MBP	386.98	236.74	10.37	1.63	496.95	2.10
ASHRAE CBP	416.27	227.04	9.06	1.83	535.29	2.36
ASHRAE HBP 32	820.96	310.87	16.35	2.64	967.07	3.11
ASHRAE HBP 46	730.32	308.36	16.17	2.37	876.67	2.84
CECOMAF HBP	608.51	298.19	14.95	2.04	752.30	2.52
EN12900 HBP**	650.40	284.46	15.16	2.29	783.68	2.75
EN12900 MBP**	373.63	201.35	8.16	1.86	474.14	2.35

* Calculations performed considering isentropic compression and a housing loss of 10%. This is an estimated heat amount discarded in the discharge pipe and the condenser combined.

CONDENSING TEMP. 35 °C**(SUBCOOLING : 0 K, RETURN TEMP.: 32 °C)**

Evaporating temperature °C	Cooling capacity	Power consumption	Gas flow rate	Cooling Efficiency	Heating capacity +/-	Heating Efficiency
	+/-5%	+/-5%	+/-5%	+/- 7%	5% *	+/- 7%
	W	W	kg/h	W/W	W	W/W
-15.00	335.71	171.45	6.70	1.96	415.97	2.43
-10.00	418.75	186.97	8.39	2.24	505.70	2.70
-5.00	518.13	203.22	10.42	2.55	610.47	3.00
0.00	636.29	219.45	12.86	2.90	732.12	3.34
5.00	775.74	234.34	15.78	3.31	872.49	3.72
10.00	939.23	245.84	19.24	3.82	1,033.56	4.20

CONDENSING TEMP. 45 °C**(SUBCOOLING : 0 K, RETURN TEMP.: 32 °C)**

Evaporating temperature °C	Cooling capacity	Power consumption	Gas flow rate	Cooling Efficiency	Heating capacity +/-	Heating Efficiency
	+/-5%	+/-5%	+/-5%	+/- 7%	5% *	+/- 7%
	W	W	kg/h	W/W	W	W/W
-15.00	298.67	181.87	6.50	1.64	389.50	2.14
-10.00	373.63	201.35	8.16	1.86	474.14	2.35
-5.00	462.34	222.54	10.14	2.08	571.48	2.57
0.00	567.66	245.38	12.52	2.31	684.13	2.79
5.00	692.19	269.30	15.37	2.57	814.14	3.02
10.00	838.54	293.16	18.77	2.86	963.44	3.29

CONDENSING TEMP. 55 °C**(SUBCOOLING : 0 K, RETURN TEMP.: 32 °C)**

Evaporating temperature °C	Cooling capacity	Power consumption	Gas flow rate	Cooling Efficiency	Heating capacity +/-	Heating Efficiency
	+/-5%	+/-5%	+/-5%	+/- 7%	5% *	+/- 7%
	W	W	kg/h	W/W	W	W/W
-15.00	256.73	188.10	6.16	1.36	354.48	1.88
-10.00	326.76	212.49	7.88	1.54	438.22	2.06
-5.00	406.21	238.39	9.84	1.70	529.69	2.22
0.00	499.11	266.86	12.17	1.87	633.41	2.37
5.00	608.51	298.19	14.95	2.04	752.30	2.52
10.00	737.11	332.12	18.26	2.22	888.56	2.68

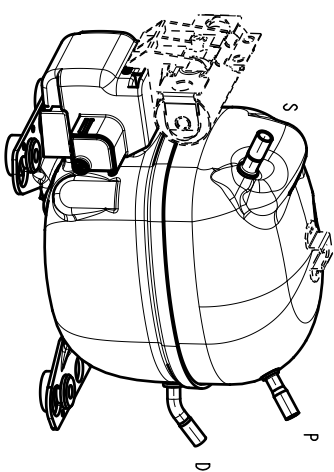
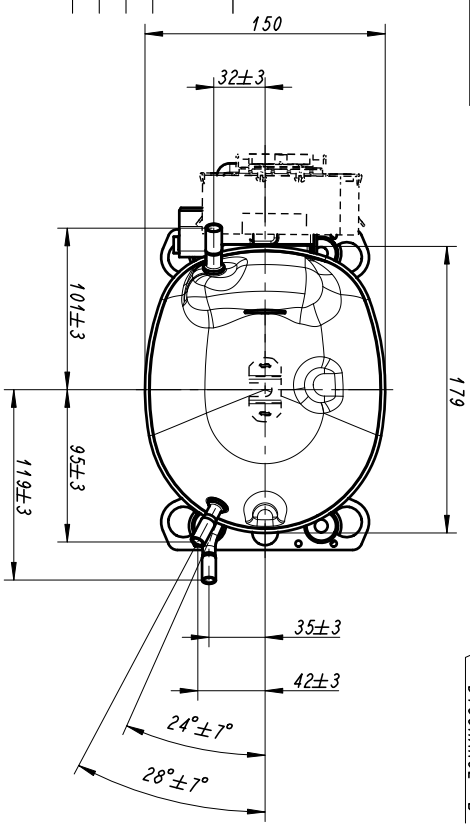
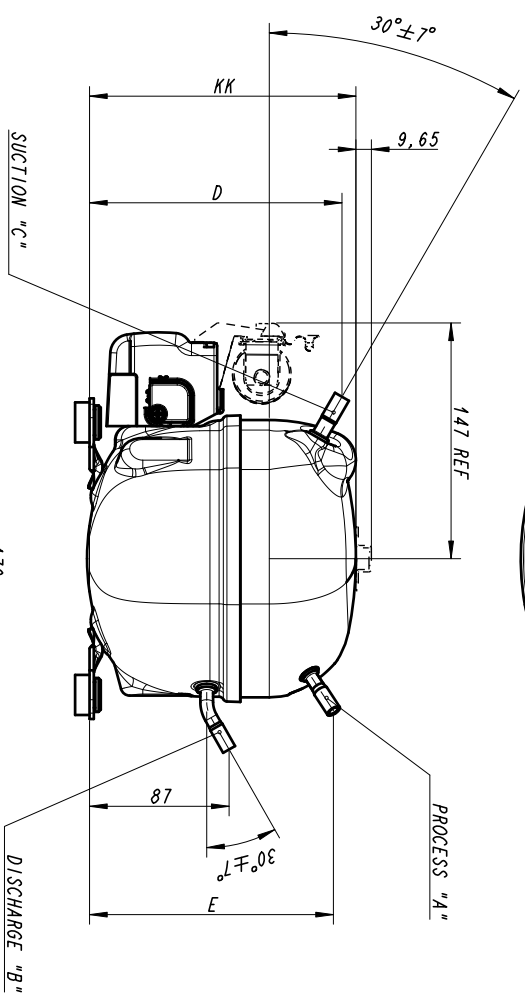
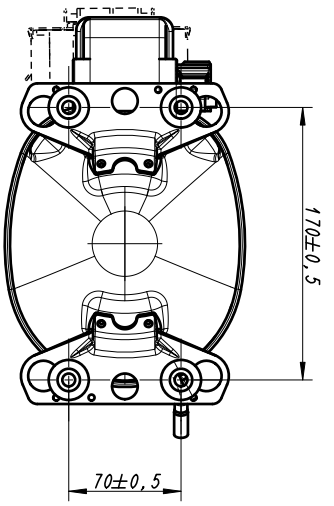
ELECTRICAL ACCESSORIES

Kit:	1
Starter device:	CURRENT RELAY
Engineering code:	MTRP-36
Run capacitor:	--
Starting capacitor:	53-64

Thermal protector: T0571/G6**Institutes approved for this electric kit:**

If purchased without electricals consult Embraco to verify the supplier of electricals approved for this compressor

MECHANICAL ACCESSORIES**Rubber damper:** Yes**Metal bushing:** Optional



171	Ø6,5 (INT.)	Ø4,94 (INT.)	Ø6,5 (INT.)	162	157	MODELS
166	Ø6,5 (INT.)	Ø4,94 (INT.)	Ø6,5 (INT.)	157	152	
155	Ø6,5 (INT.)	Ø4,94 (INT.)	Ø6,5 (INT.)	146	141	
KK	A	B	C	D	E	

embraco

COMMERCIAL DRAWING
EM - AMERICA (EU)

MATERIAL :
CODE :
DRAWN : JAQUELINE SOUZA MAR. 27. 2015
APP. :

GEN. TOL. :
ANG. TOL. :
SCALE : 3:10
REPLACE

No. 51.330.2000.16

ECM	REVISION	LO	BY	APP	DATE

UNLESS OTHERWISE STATED, ALL DIMENSIONS ARE IN mm.
THIS MATERIAL IS CONFIDENTIAL AND PROPRIETARY TO WHIRLPOOL S/A-EMBRACO BUSINESS UNIT AND MAY NOT BE REPRODUCED, DISCLOSED, DISTRIBUTED OR USED WITHOUT PERMISSION.