



Model: EMY26CLC  
Code: 513300426

**embraco** POWER IN.  
CHANGE ON

Type:	On-off
Voltage [V] / Frequency [Hz] / Phases	220-240 V 50 Hz 1 ~
Refrigerant:	R-600a
Application:	LBP

Motor type:	LST
Starting torque:	
HP:	1/9
Displacement:	5.19 cm <sup>3</sup>

### OPERATING CONDITION : ASHRAE LBP 32

Evaporation Temp.	-23.3 °C	Return Temp.	32.2 °C	Superheating	55.5 K
Condensing Temp.	54.4 °C	Liquid Temp.	32.2 °C	Subcooling	22.2 K

<b>Cooling capacity</b>	<b>Power consumption</b>	<b>Mass flow rate</b>	<b>Efficiency</b>
82.27 W	51.25 W	0.88 kg/h	1.61 W/W

### APPLICATION

Evaporating temperature range:	-35 to -10 °C	Cooling type:	Static
Permanent operating temperature (peak) :	55 (65) °C	Air Flow	--
Expansion device:	Capillary tube	Maximum motor temperature:	130 °C

### ELECTRICAL DATA

Start winding resistance at 25°C (77°F):	26.2 Ω +/- 8%	Run winding resistance at 25°C (77°F):	48.6 Ω +/- 8%
FLA - full load amperage L/MBP [A] 50 Hz / 60 Hz:	1.09 / -	LRA (A) 50 Hz / 60 Hz:	7.75 / -
		FLA - full load amperage HBP [A] 50 Hz / 60 Hz:	- / -

### MECHANICAL DATA

Bore:	21 mm	Stroke:	7.5 mm
		Displacement:	5.19 cm <sup>3</sup>

### OTHER INFORMATION

Weight:	7.5 kg	Oil charge:	150 ml
Lubricant type:	Mineral ISO5	Nitrogen charge:	No

### EXTERNAL SETTINGS

	Shape	Material	Diameter [mm]
Suction connector	Slanted 40° up + 45° to Back	Copper	6.10
Discharge connector	Slanted 42° up + 24° to Back	Copper	5.10
Process connector	Slanted 40° up + 45° to Back	Copper(OD)	6.00
Base plate:	European Standard	Tray holder:	Yes

### PERFORMANCES AT STANDARD CHECK-POINTS

Checkpoint	Cooling capacity	Power consumption	Gas flow rate	Cooling Efficiency	Heating capacity +/-	Heating Efficiency
	+/-5% W	+/-5% W	+/-5% kg/h	+/- 7% W/W	5%* W	+/- 7% W/W
ARI LBP	69.18	49.59	1.01	1.39	96.85	1.95
ASHRAE LBP 32	82.27	51.25	0.88	1.61	110.65	2.16
CECOMAF LBP	61.63	48.96	0.80	1.26	88.45	1.81
EN12900 LBP**	44.41	34.13	0.51	1.30	62.19	1.82
EN12900 MBP**	152.57	65.88	1.83	2.32	191.37	2.90

\* Calculations performed considering isentropic compression and a housing loss of 10%. This is an estimated heat amount discarded in the discharge pipe and the condenser combined.

**CONDENSING TEMP. 35 °C****(SUBCOOLING : 22.2 K, RETURN TEMP.: 32 °C)**

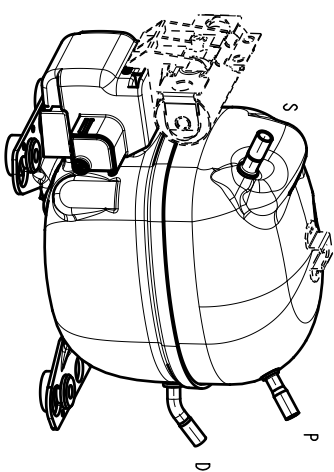
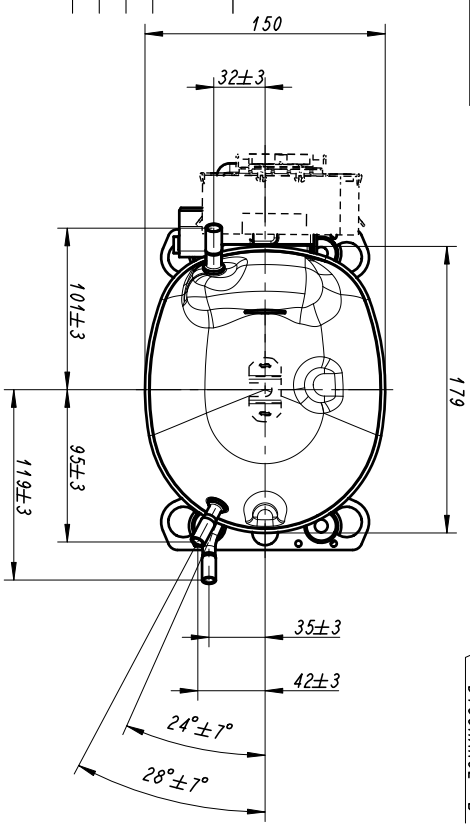
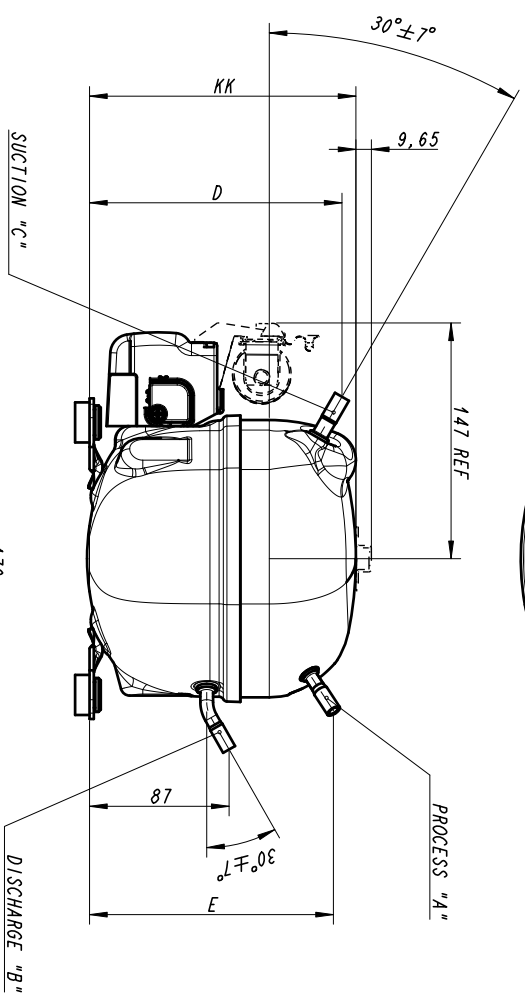
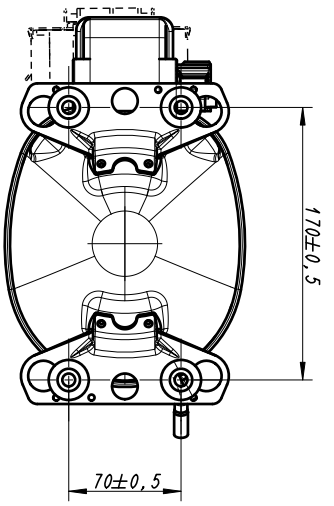
Evaporating temperature °C	Cooling capacity	Power consumption	Gas flow rate	Cooling Efficiency	Heating capacity +/-	Heating Efficiency
	+/-5%	+/-5%	+/-5%	+/- 7%	5% *	+/- 7%
	W	W	kg/h	W/W	W	W/W
-35.00	55.61	33.08	0.52	1.68	73.01	2.21
-30.00	73.91	37.83	0.70	1.95	94.64	2.50
-25.00	96.98	42.90	0.91	2.26	121.24	2.83
-20.00	125.62	48.10	1.19	2.61	153.44	3.19
-15.00	160.53	53.20	1.52	3.02	191.80	3.61
-10.00	202.48	57.92	1.92	3.50	236.82	4.09

**CONDENSING TEMP. 45 °C****(SUBCOOLING : 22.2 K, RETURN TEMP.: 32 °C)**

Evaporating temperature °C	Cooling capacity	Power consumption	Gas flow rate	Cooling Efficiency	Heating capacity +/-	Heating Efficiency
	+/-5%	+/-5%	+/-5%	+/- 7%	5% *	+/- 7%
	W	W	kg/h	W/W	W	W/W
-35.00	48.48	34.97	0.49	1.39	66.47	1.90
-30.00	64.97	40.49	0.65	1.60	86.77	2.14
-25.00	85.47	46.45	0.86	1.84	111.32	2.40
-20.00	111.05	52.80	1.12	2.10	141.18	2.67
-15.00	142.54	59.37	1.44	2.40	177.06	2.98
-10.00	180.70	65.88	1.83	2.74	219.50	3.33

**CONDENSING TEMP. 55 °C****(SUBCOOLING : 22.2 K, RETURN TEMP.: 32 °C)**

Evaporating temperature °C	Cooling capacity	Power consumption	Gas flow rate	Cooling Efficiency	Heating capacity +/-	Heating Efficiency
	+/-5%	+/-5%	+/-5%	+/- 7%	5% *	+/- 7%
	W	W	kg/h	W/W	W	W/W
-35.00	40.04	35.63	0.43	1.12	57.47	1.61
-30.00	55.96	42.16	0.60	1.33	78.16	1.85
-25.00	74.37	48.96	0.80	1.52	101.18	2.07
-20.00	96.98	56.25	1.05	1.72	128.65	2.29
-15.00	124.93	64.02	1.35	1.95	161.74	2.53
-10.00	159.08	72.09	1.73	2.21	201.16	2.79



171	Ø6,5 (INT.)	Ø4,94 (INT.)	Ø6,5 (INT.)	162	157	MODELS
166	Ø6,5 (INT.)	Ø4,94 (INT.)	Ø6,5 (INT.)	157	152	
155	Ø6,5 (INT.)	Ø4,94 (INT.)	Ø6,5 (INT.)	146	141	
KK	A	B	C	D	E	

**embraco**

NAME  
**COMMERCIAL DRAWING**  
EM - AMERICA (EU)

CODE :

DRAWN : JAQUELINE SOUZA MAR. 27. 2015

APP. :

ECM :

GEN. TOL. :  
ANG. TOL. :  
SCALE : 3:10  
REPLACE

A3

No. **51.330.2000.16**