



Model: EMY55CLP  
Code: 513300113

**embraco** POWER IN.  
CHANGE ON

Type:	On-off
Voltage [V] / Frequency [Hz] / Phases	220-240 V 50 Hz 1 ~
Refrigerant:	R-600a
Application:	LBP

Motor type:	RSCR
Starting torque:	LST
HP:	1/4
Displacement:	9.04 cm <sup>3</sup>

### OPERATING CONDITION : ASHRAE LBP 32

Evaporation Temp.	-23.3 °C	Return Temp.	32.2 °C	Superheating	55.5 K
Condensing Temp.	54.4 °C	Liquid Temp.	32.2 °C	Subcooling	22.2 K

<b>Cooling capacity</b>	<b>Power consumption</b>	<b>Mass flow rate</b>	<b>Efficiency</b>
153.65 W	95.10 W	1.65 kg/h	1.62 W/W

### APPLICATION

Evaporating temperature range:	-35 to -10 °C	Cooling type:	Static
Permanent operating temperature (peak) :	55 (65) °C	Air Flow	--
Expansion device:	Capillary tube	Maximum motor temperature:	130 °C

### ELECTRICAL DATA

Start winding resistance at 25°C (77°F):	25.1 Ω +/- 8%	Run winding resistance at 25°C (77°F):	22.75 Ω +/- 8%
FLA - full load amperage L/MBP [A] 50 Hz / 60 Hz:	- / -	LRA (A) 50 Hz / 60 Hz:	- / -
		FLA - full load amperage HBP [A] 50 Hz / 60 Hz:	- / -

### MECHANICAL DATA

Bore:	24 mm	Stroke:	10 mm
		Displacement:	9.04 cm <sup>3</sup>

### OTHER INFORMATION

Weight:	7.4 kg	Oil charge:	150 ml
Lubricant type:	Alkylbenzenic ISO5	Nitrogen charge:	No

### EXTERNAL SETTINGS

	Shape	Material	Diameter [mm]
Suction connector	Slanted 40° up + 45° to Back	Copper	6.20
Discharge connector	Slanted 0° up + 24° to Back	Copper	4.90
Process connector	Slanted 40° up + 45° to Back	Copper	6.20
Base plate:	European Standard EUEM	Tray holder:	Yes

### PERFORMANCES AT STANDARD CHECK-POINTS

Checkpoint	Cooling capacity	Power consumption	Gas flow rate	Cooling Efficiency	Heating capacity +/-	Heating Efficiency
	+/-5% W	+/-5% W	+/-5% kg/h	+/- 7% W/W	5%* W	+/- 7% W/W
ARI LBP	129.10	93.60	1.88	1.38	180.74	1.93
ASHRAE LBP 32	153.65	95.10	1.65	1.62	206.65	2.17
CECOMAF LBP	115.00	90.00	1.50	1.28	165.02	1.83
EN12900 LBP**	81.75	62.51	0.93	1.31	114.47	1.83
EN12900 MBP**	277.93	133.38	3.33	2.08	348.61	2.61

\* Calculations performed considering isentropic compression and a housing loss of 10%. This is an estimated heat amount discarded in the discharge pipe and the condenser combined.

**CONDENSING TEMP. 35 °C****(SUBCOOLING : 22.2 K, RETURN TEMP.: 32 °C)**

Evaporating temperature °C	Cooling capacity	Power consumption	Gas flow rate	Cooling Efficiency	Heating capacity +/-	Heating Efficiency
	+/-5%	+/-5%	+/-5%	+/- 7%	5% *	+/- 7%
	W	W	kg/h	W/W	W	W/W
-35.00	102.57	61.60	0.97	1.67	134.67	2.19
-30.00	136.70	71.54	1.29	1.91	175.05	2.45
-25.00	178.68	82.87	1.69	2.16	223.37	2.70
-20.00	229.68	95.18	2.17	2.41	280.57	2.95
-15.00	290.89	108.00	2.75	2.69	347.55	3.22
-10.00	363.60	120.70	3.44	3.01	425.27	3.52

**CONDENSING TEMP. 45 °C****(SUBCOOLING : 22.2 K, RETURN TEMP.: 32 °C)**

Evaporating temperature °C	Cooling capacity	Power consumption	Gas flow rate	Cooling Efficiency	Heating capacity +/-	Heating Efficiency
	+/-5%	+/-5%	+/-5%	+/- 7%	5% *	+/- 7%
	W	W	kg/h	W/W	W	W/W
-35.00	89.10	63.33	0.89	1.41	122.15	1.93
-30.00	120.40	74.19	1.21	1.62	160.80	2.17
-25.00	158.80	87.01	1.60	1.83	206.82	2.38
-20.00	205.59	101.45	2.07	2.03	261.36	2.58
-15.00	261.97	117.09	2.64	2.24	325.40	2.78
-10.00	329.18	133.38	3.33	2.47	399.86	3.00

**CONDENSING TEMP. 55 °C****(SUBCOOLING : 22.2 K, RETURN TEMP.: 32 °C)**

Evaporating temperature °C	Cooling capacity	Power consumption	Gas flow rate	Cooling Efficiency	Heating capacity +/-	Heating Efficiency
	+/-5%	+/-5%	+/-5%	+/- 7%	5% *	+/- 7%
	W	W	kg/h	W/W	W	W/W
-35.00	74.61	64.67	0.80	1.15	107.10	1.66
-30.00	103.75	76.04	1.12	1.36	144.91	1.91
-25.00	138.76	90.00	1.50	1.54	188.78	2.10
-20.00	181.28	106.19	1.96	1.71	240.47	2.26
-15.00	232.65	124.25	2.52	1.87	301.19	2.42
-10.00	294.11	143.74	3.19	2.05	371.91	2.59

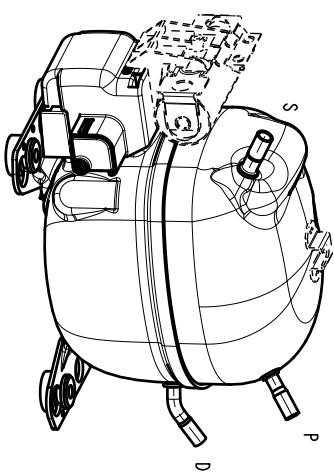
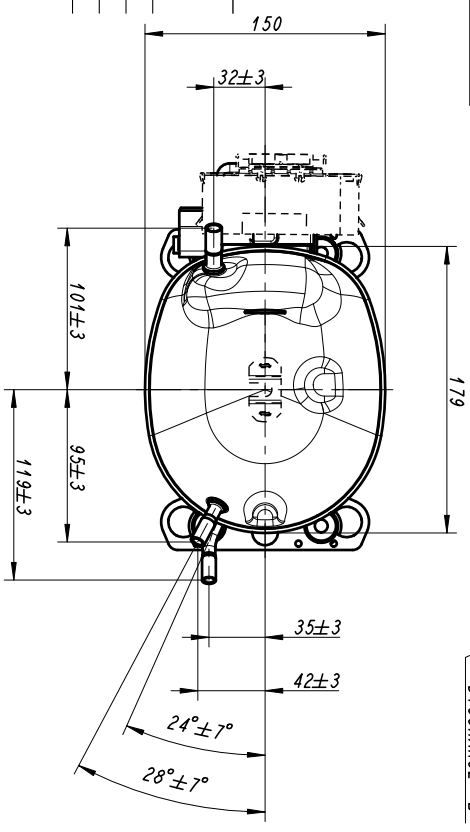
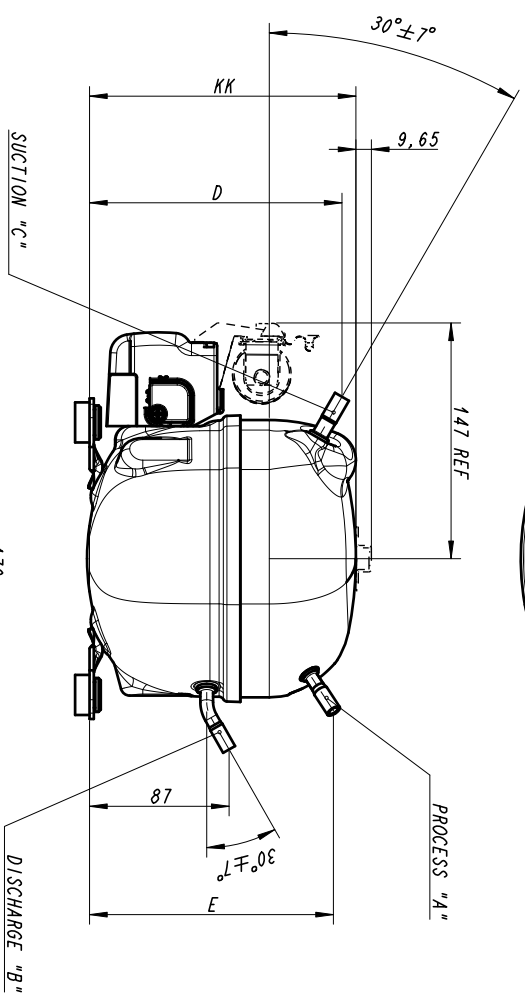
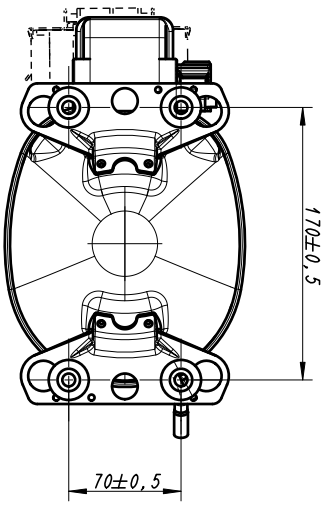
**ELECTRICAL ACCESSORIES**

<b>Kit:</b>	1
<b>Starter device:</b>	PTC
<b>Engineering code:</b>	8EA17B3
<b>Run capacitor:</b>	--
<b>Starting capacitor:</b>	--

**Thermal protector:** 4TM189KFBYY-53**Institutes approved for this electric kit:**

If purchased without electricals consult Embraco to verify the supplier of electricals approved for this compressor

**MECHANICAL ACCESSORIES****Rubber damper:** Yes**Metal bushing:** Optional



171	Ø6,5 (INT.)	Ø4,94 (INT.)	Ø6,5 (INT.)	162	157	
166	Ø6,5 (INT.)	Ø4,94 (INT.)	Ø6,5 (INT.)	157	152	
155	Ø6,5 (INT.)	Ø4,94 (INT.)	Ø6,5 (INT.)	146	141	
KK	A	B	C	D	E	MODELS

**embraco**

COMMERCIAL DRAWING  
EM - AMERICA (EU)

MATERIAL :  
CODE :  
DRAWN : JAQUELINE SOUZA MAY. 27. 2015  
APP. :

NAME  
UNLESS OTHERWISE STATED, ALL DIMENSIONS ARE IN mm

GEN. TOL. :  
ANG. TOL. :  
SCALE : 3:10  
REPLACE  
No. 51.330.2000.16

ECM	REVISION	LO	BY	APP	DATE

THIS MATERIAL IS CONFIDENTIAL AND PROPRIETARY TO WHIRLPOOL S/A-EMBACO BUSINESS UNIT AND MAY NOT BE REPRODUCED, DISCLOSED, DISTRIBUTED OR USED WITHOUT PERMISSION.