



Model: NE2134Z
Code: 263CA51

embraco POWER IN.
CHANGE ON

Type:	On-off
Voltage [V] / Frequency [Hz] / Phases	220-240 V 50 Hz 1 ~
Refrigerant:	R-134a
Application:	LBP

Motor type:	CSIR
Starting torque:	HST
HP:	1/2
Displacement:	14.28 cm ³

OPERATING CONDITION : ASHRAE LBP 32

Evaporation Temp.	-23.3 °C	Return Temp.	32.2 °C	Superheating	55.5 K
Condensing Temp.	54.4 °C	Liquid Temp.	32.2 °C	Subcooling	22.2 K

Cooling capacity	Power consumption	Mass flow rate	Efficiency
361.09 W	289.08 W	7.01 kg/h	1.25 W/W

APPLICATION

Evaporating temperature range:	-30 to -5 °C	Cooling type:	Fan Cooling
Permanent operating temperature (peak) :	60 (70) °C	Air Flow	--
Expansion device:	Capillary tube or Expansion valve	Maximum motor temperature:	130 °C

ELECTRICAL DATA

Start winding resistance at 25°C (77°F):	31.5 Ω +/- 8%	Run winding resistance at 25°C (77°F):	4.8 Ω +/- 8%
FLA - full load amperage L/MBP [A] 50 Hz / 60 Hz:	- / -	LRA (A) 50 Hz / 60 Hz:	- / -
		FLA - full load amperage HBP [A] 50 Hz / 60 Hz:	- / -

MECHANICAL DATA

Bore:	30.16 mm	Stroke:	10 mm
		Displacement:	14.28 cm ³

OTHER INFORMATION

Weight:	11.65 kg	Oil charge:	350 ml
Lubricant type:	Polyolester ISO22	Nitrogen charge:	Yes

EXTERNAL SETTINGS

	Shape	Material	Diameter [mm]
-			
Suction connector	Slanted 42°	Copper	8.10
Discharge connector	Straight	Copper	6.10
Process connector	Slanted 42°	Copper	6.10
Base plate:	European Standard	Tray holder:	No

PERFORMANCES AT STANDARD CHECK-POINTS

Checkpoint	Cooling capacity	Power consumption	Gas flow rate	Cooling Efficiency	Heating capacity +/-	Heating Efficiency
	+/-5% W	+/-5% W	+/-5% kg/h	+/- 7% W/W	5%* W	+/- 7% W/W
ARI LBP	305.03	308.58	8.01	0.99	432.97	1.40
ARI MBP	692.96	478.45	18.57	1.45	889.87	1.86
ASHRAE CBP	738.13	444.98	16.07	1.66	949.16	2.13
ASHRAE LBP 32	361.09	289.08	7.01	1.25	493.24	1.71
CECOMAF LBP	265.79	275.19	6.34	0.97	390.29	1.42
EN12900 MBP**	664.78	395.90	14.52	1.68	843.59	2.13

* Calculations performed considering isentropic compression and a housing loss of 10%. This is an estimated heat amount discarded in the discharge pipe and the condenser combined.

CONDENSING TEMP. 35 °C**(SUBCOOLING : 22.2 K, RETURN TEMP.: 32 °C)**

Evaporating temperature °C	Cooling capacity	Power consumption	Gas flow rate	Cooling Efficiency	Heating capacity +/-	Heating Efficiency
	+/-5%	+/-5%	+/-5%	+/- 7%	5% *	+/- 7%
	W	W	kg/h	W/W	W	W/W
-30.00	321.79	231.13	5.43	1.39	416.97	1.80
-25.00	424.29	262.73	7.17	1.61	535.83	2.04
-20.00	550.16	296.84	9.32	1.85	677.89	2.28
-15.00	702.74	332.44	11.93	2.11	845.72	2.54
-10.00	885.61	368.12	15.08	2.41	1,042.03	2.83
-5.00	1,102.75	402.05	18.85	2.74	1,269.79	3.16

CONDENSING TEMP. 45 °C**(SUBCOOLING : 22.2 K, RETURN TEMP.: 32 °C)**

Evaporating temperature °C	Cooling capacity	Power consumption	Gas flow rate	Cooling Efficiency	Heating capacity +/-	Heating Efficiency
	+/-5%	+/-5%	+/-5%	+/- 7%	5% *	+/- 7%
	W	W	kg/h	W/W	W	W/W
-30.00	281.76	235.79	5.09	1.19	381.92	1.62
-25.00	374.67	271.19	6.78	1.38	494.33	1.82
-20.00	489.02	310.19	8.87	1.58	628.73	2.03
-15.00	628.29	352.12	11.42	1.78	787.98	2.24
-10.00	795.94	395.90	14.52	2.01	974.76	2.46
-5.00	995.68	440.05	18.23	2.26	1,191.84	2.71

CONDENSING TEMP. 55 °C**(SUBCOOLING : 22.2 K, RETURN TEMP.: 32 °C)**

Evaporating temperature °C	Cooling capacity	Power consumption	Gas flow rate	Cooling Efficiency	Heating capacity +/-	Heating Efficiency
	+/-5%	+/-5%	+/-5%	+/- 7%	5% *	+/- 7%
	W	W	kg/h	W/W	W	W/W
-30.00	240.65	235.94	4.68	1.02	342.38	1.45
-25.00	325.09	275.19	6.34	1.18	449.59	1.63
-20.00	428.04	318.34	8.37	1.34	576.03	1.81
-15.00	553.57	365.46	10.85	1.51	725.69	1.99
-10.00	705.28	415.87	13.87	1.70	901.59	2.17
-5.00	886.74	468.36	17.52	1.89	1,106.46	2.36

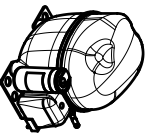
ELECTRICAL ACCESSORIES

Kit:	1
Starter device:	CURRENT RELAY
Engineering code:	MTRP-47
Run capacitor:	--
Starting capacitor:	53-64

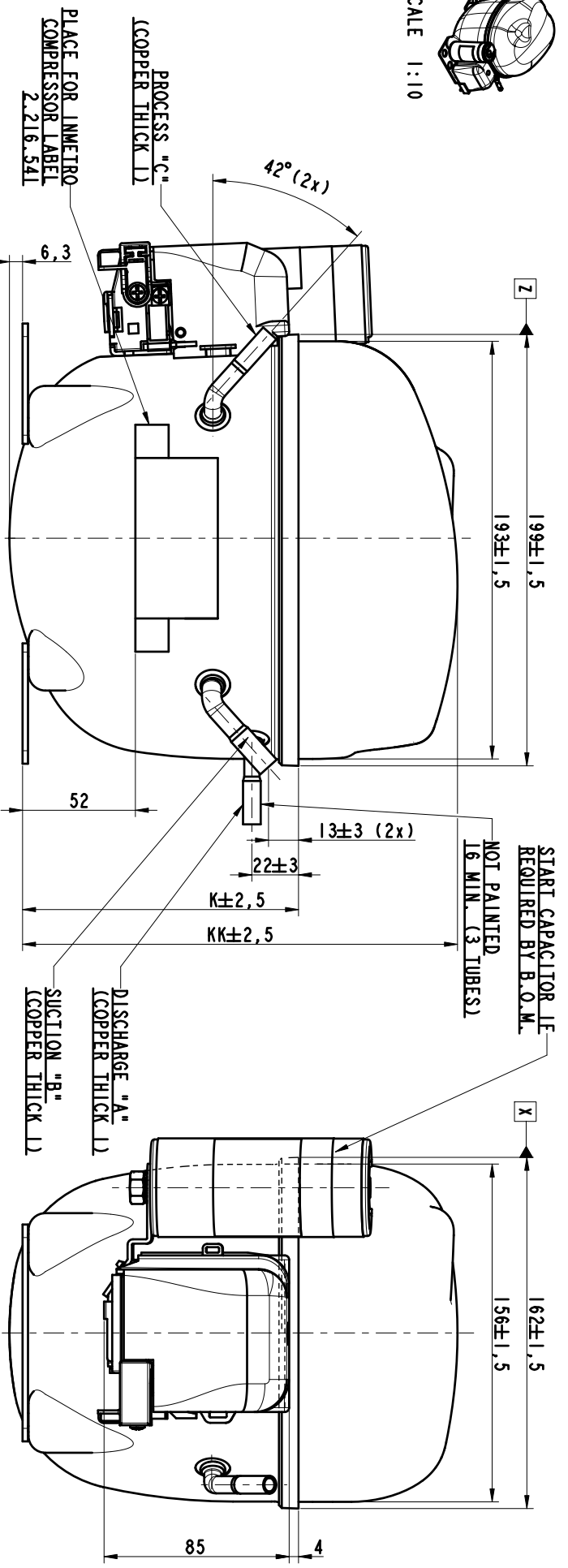
Thermal protector: T0546/G6**Institutes approved for this electric kit:**

If purchased without electricals consult Embraco to verify the supplier of electricals approved for this compressor

MECHANICAL ACCESSORIES**Rubber damper:** Yes**Metal bushing:** Optional



SCALE 1:10



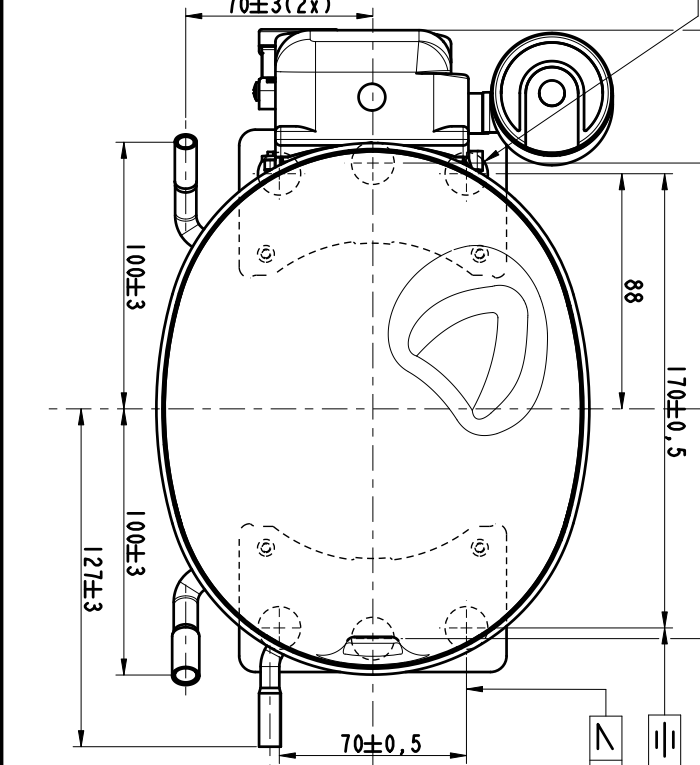
PAGE 1/2

Ø 16^{+0,25} (6 HOLES)

3 Z
1,5 X

50HZ MODELS

ECM	REVISION	LO	BY	APP	DATE
39503	3	TAB	KK	RR	07.09.2015
44703	4	TAB	KK	NG	20.01.2017



206	127	188	200	115	127	188	200	115	206	127	188	200	115	206	127	188	200	115	
1.D.	1.D.	1.D.	1.D.	1.D.	1.D.	1.D.	1.D.	1.D.	1.D.	1.D.	1.D.	1.D.	1.D.	1.D.	1.D.	1.D.	1.D.	1.D.	1.D.
6.1-6.2	6.1-6.2	6.1-6.2	6.1-6.2	6.1-6.2	6.1-6.2	6.1-6.2	6.1-6.2	6.1-6.2	6.1-6.2	6.1-6.2	6.1-6.2	6.1-6.2	6.1-6.2	6.1-6.2	6.1-6.2	6.1-6.2	6.1-6.2	6.1-6.2	6.1-6.2
X 20 DEEP	X 20 DEEP	X 20 DEEP	X 20 DEEP	X 20 DEEP	X 20 DEEP	X 20 DEEP	X 20 DEEP	X 20 DEEP	X 20 DEEP	X 20 DEEP	X 20 DEEP	X 20 DEEP	X 20 DEEP	X 20 DEEP	X 20 DEEP	X 20 DEEP	X 20 DEEP	X 20 DEEP	X 20 DEEP
953.51	953.51	953.51	952.51	953.51	953.51	953.51	952.51	953.51	953.51	953.51	953.51	952.51	953.51	953.51	953.51	953.51	952.51	953.51	953.51
NE21346K	NE21346K	NE21346K	NE61819K	NE21346K	NE21346K	NE21346K	NE61819K	NE21346K	NE21346K	NE21346K	NE21346K	NE61819K	NE21346K	NE21346K	NE21346K	NE21346K	NE61819K	NE21346K	NE21346K

MATERIAL :
CODE :
DRAWN : TONELLA M.
APP. : VALENO P.
ECM : TDT 29225

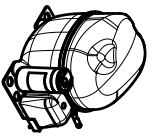
03-07-2002

THIS MATERIAL IS SPECIFICALLY AND EXCLUSIVELY DESIGNED FOR EMBRACO EQUIPMENT AND ANY USE OUTSIDE OF THIS INTENTION WILL BE AT THE USER'S RISK.

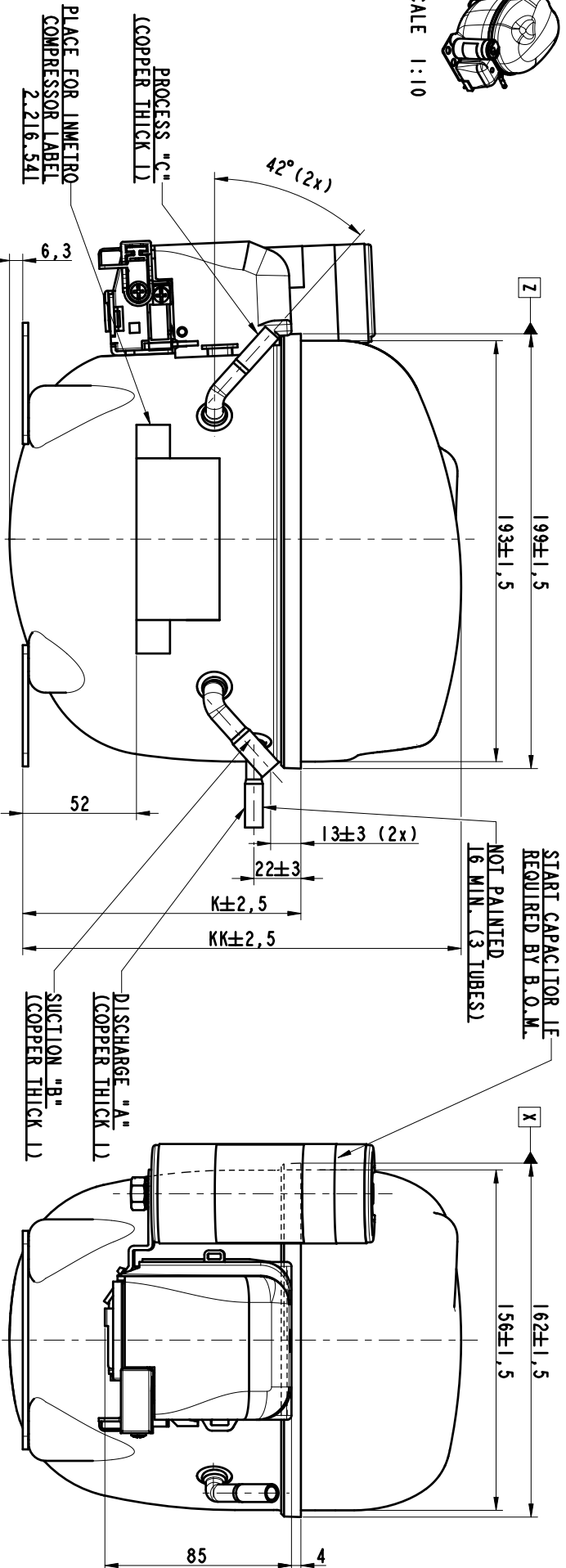
embraco

VISTA ESTERNA "NE"
EXTERNAL VIEW "NE-COMPRESSORS"

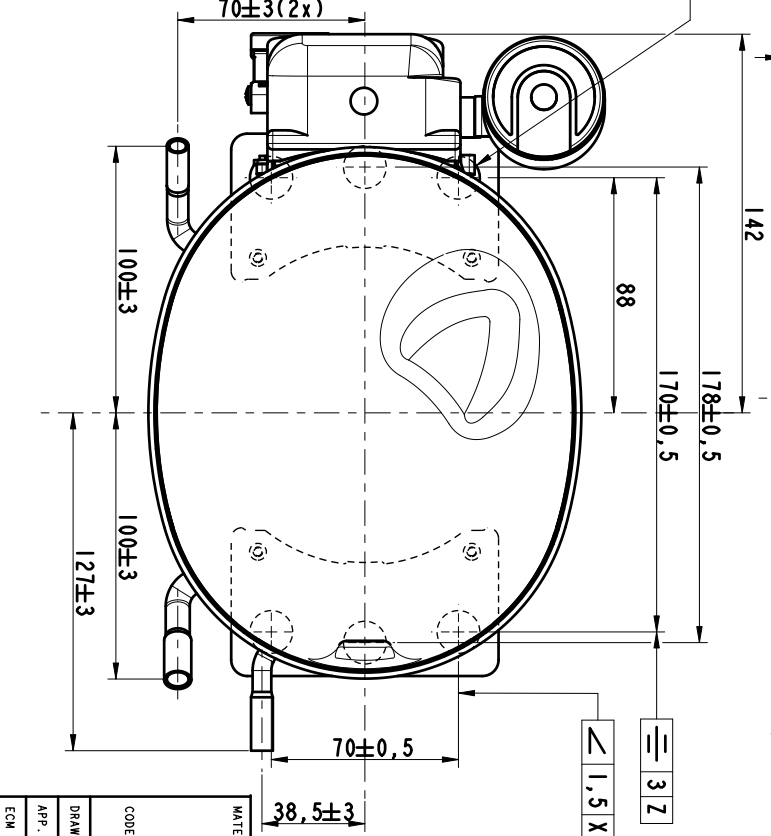
GEN. TOL. : --
ANG. TOL. : --
SCALE : 1:2
REPLACE : --
No. : 1.960.798



SCALE 1:10



ECM	REVISION	LO	BY	APP	DATE
39503	3	TAB	KK	RR	07.09.2015
44703	4	TAB	KK	NG	20.01.2017



ECM	REVISION	LO	BY	APP	DATE
39503	3	TAB	KK	RR	07.09.2015
44703	4	TAB	KK	NG	20.01.2017

CODE	MATERIAL	NAME	EXTERNAL VIEW	INTERNAL VIEW	MODELS
206	127	6.1-6.2 X 20 DEEP	8.1-8.2 X 20 DEEP	6.1-6.2 X 20 DEEP	NE21346K
200	127	6.1-6.2 X 20 DEEP	8.1-8.2 X 20 DEEP	6.1-6.2 X 20 DEEP	NE61819K
188	115	6.1-6.2 X 20 DEEP	8.1-8.2 X 20 DEEP	6.1-6.2 X 20 DEEP	NE6160Z NE5170Z NE6170Z NE5187Z NE6187Z NE2125E NE6210E NE2125GK NE6210GK

GEN. TOL.	ANG. TOL.	SCALE	REPLACE
--	--	1:2	--

APP.	DATE	NAME
VALENO P.	03-07-2002	VALENO P.

ECM	REVISION	LO	BY	APP	DATE
TDI 29225					

embraco

VISTA ESTERNA "NE"

EXTERNAL VIEW "NE-COMPRESSORS"

1.960.798