



Model: NJ2212GK
Code: 943DA11

embraco POWER IN.
CHANGE ON

Type:	On-off
Voltage [V] / Frequency [Hz] / Phases	220-240 V 50 Hz 1 ~
Refrigerant:	R-404A
Application:	LBP

Motor type:	CSCR
Starting torque:	HST
HP:	1 1/2
Displacement:	34.38 cm ³

OPERATING CONDITION : ASHRAE LBP 32

Evaporation Temp.	-23.3 °C	Return Temp.	32.2 °C	Superheating	55.5 K
Condensing Temp.	54.4 °C	Liquid Temp.	32.2 °C	Subcooling	22.2 K

Cooling capacity	Power consumption	Mass flow rate	Efficiency
1,530.33 W	1,141.59 W	35.55 kg/h	1.34 W/W

APPLICATION

Evaporating temperature range:	-40 to -10 °C	Cooling type:	Fan Cooling
Permanent operating temperature (peak) :	55 (60) °C	Air Flow	--
Expansion device:	Capillary tube or Expansion valve	Maximum motor temperature:	130 °C

ELECTRICAL DATA

Start winding resistance at 25°C (77°F):	4.84 Ω +/- 8%	Run winding resistance at 25°C (77°F):	1.7 Ω +/- 8%
FLA - full load amperage L/MBP [A] 50 Hz / 60 Hz:	- / -	LRA (A) 50 Hz / 60 Hz:	- / -
		FLA - full load amperage HBP [A] 50 Hz / 60 Hz:	- / -

MECHANICAL DATA

Bore:	42.85 mm	Stroke:	11.93 mm
		Displacement:	34.38 cm ³

OTHER INFORMATION

Weight:	21.5 kg	Oil charge:	750 ml
Lubricant type:	Polyolester ISO22	Nitrogen charge:	Yes

EXTERNAL SETTINGS

	Shape	Material	Diameter [mm]
Suction connector	Vertical	Copper	12.77
Discharge connector	Slanted J	Copper	8.00
Process connector	Vertical	Copper	6.42
Base plate:	American Standard	Tray holder:	No

PERFORMANCES AT STANDARD CHECK-POINTS

Checkpoint	Cooling capacity	Power consumption	Gas flow rate	Cooling Efficiency	Heating capacity +/-	Heating Efficiency
	+/-5% W	+/-5% W	+/-5% kg/h	+/- 7% W/W	5% * W	+/- 7% W/W
EN12900 LBP	799.38	799.51	21.65	1.00	1,179.72	1.48
EN12900 MBP	2,576.12	1,682.25	77.37	1.53	3,365.08	2.00
EN12900HO	1,028.55	1,075.47	32.05	0.96	1,584.11	1.47

* Calculations performed considering isentropic compression and a housing loss of 10%. This is an estimated heat amount discarded in the discharge pipe and the condenser combined.

CONDENSING TEMP. 35 °C**(SUBCOOLING : 22.2 K, RETURN TEMP.: 32 °C)**

Evaporating temperature °C	Cooling capacity	Power consumption	Gas flow rate	Cooling Efficiency	Heating capacity +/-	Heating Efficiency
	+/-5% W	+/-5% W	+/-5% kg/h	+/- 7% W/W	5% * W	+/- 7% W/W
-40.00	823.28	659.52	15.93	1.25	1,132.80	1.72
-35.00	1,137.23	776.06	22.06	1.47	1,521.15	1.96
-30.00	1,517.40	907.35	29.53	1.67	1,975.38	2.18
-25.00	1,973.54	1,049.25	38.54	1.88	2,503.28	2.39
-20.00	2,515.61	1,195.09	49.34	2.10	3,112.29	2.60
-15.00	3,154.35	1,335.60	62.17	2.36	3,810.32	2.85
-10.00	3,901.76	1,459.03	77.36	2.67	4,606.27	3.16

CONDENSING TEMP. 45 °C**(SUBCOOLING : 22.2 K, RETURN TEMP.: 32 °C)**

Evaporating temperature °C	Cooling capacity	Power consumption	Gas flow rate	Cooling Efficiency	Heating capacity +/-	Heating Efficiency
	+/-5% W	+/-5% W	+/-5% kg/h	+/- 7% W/W	5% * W	+/- 7% W/W
-40.00	640.21	636.42	13.46	1.01	928.66	1.46
-35.00	923.65	765.87	19.47	1.21	1,300.43	1.70
-30.00	1,264.89	913.87	26.75	1.38	1,730.57	1.89
-25.00	1,674.60	1,077.95	35.56	1.55	2,228.91	2.07
-20.00	2,162.64	1,252.51	46.13	1.73	2,803.34	2.24
-15.00	2,739.07	1,428.84	58.75	1.92	3,461.37	2.42
-10.00	3,414.76	1,595.14	73.71	2.14	4,210.99	2.64

CONDENSING TEMP. 55 °C**(SUBCOOLING : 22.2 K, RETURN TEMP.: 32 °C)**

Evaporating temperature °C	Cooling capacity	Power consumption	Gas flow rate	Cooling Efficiency	Heating capacity +/-	Heating Efficiency
	+/-5% W	+/-5% W	+/-5% kg/h	+/- 7% W/W	5% * W	+/- 7% W/W
-40.00	446.42	586.29	10.32	0.76	687.20	1.17
-35.00	704.86	729.64	16.34	0.97	1,051.29	1.44
-30.00	1,008.83	892.57	23.47	1.13	1,459.59	1.64
-25.00	1,371.51	1,075.47	32.05	1.28	1,927.07	1.79
-20.00	1,803.53	1,274.47	42.36	1.42	2,463.63	1.93
-15.00	2,314.67	1,481.80	54.69	1.56	3,077.10	2.08
-10.00	2,914.90	1,685.89	69.36	1.73	3,774.87	2.24

ELECTRICAL ACCESSORIES

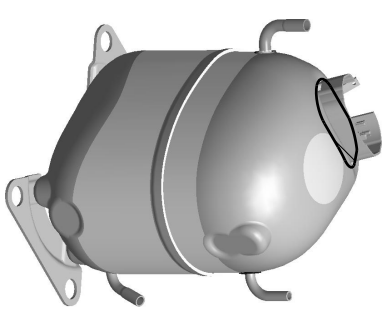
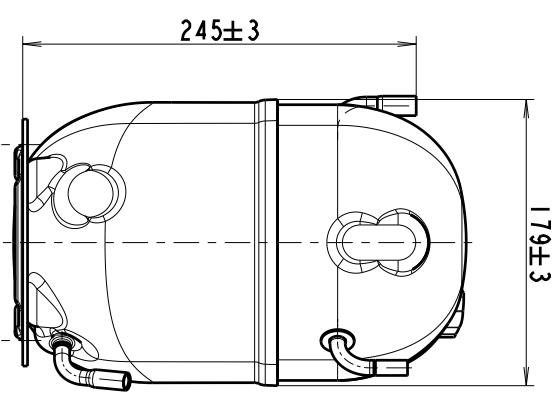
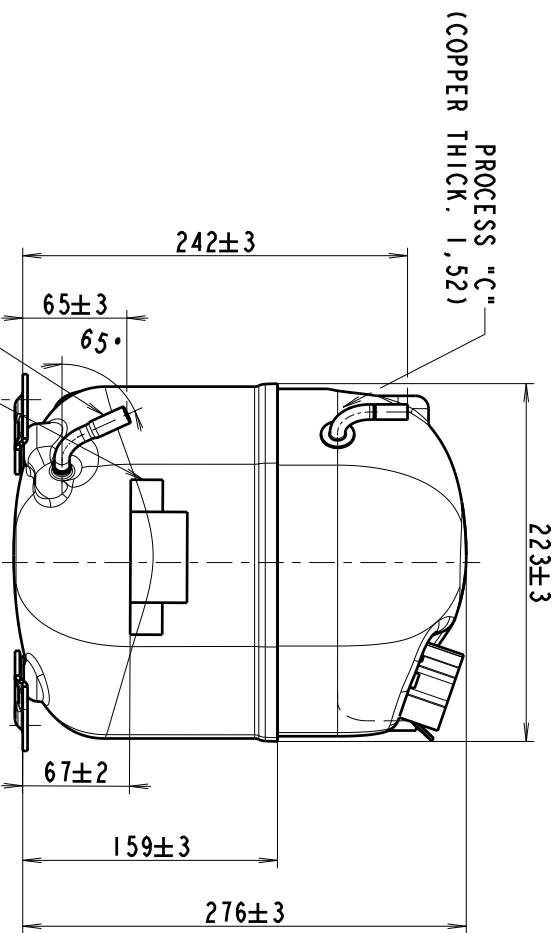
Kit:	1
Starter device:	VOLTAGE RELAY
Engineering code:	RVA2L3C-112
Run capacitor:	20
Starting capacitor:	88-108

Thermal protector: 15HM1963-248**Institutes approved for this electric kit:**

If purchased without electricals consult Embraco to verify the supplier of electricals approved for this compressor

MECHANICAL ACCESSORIES

Rubber damper:	Yes	Metal bushing:	Optional
----------------	-----	----------------	----------



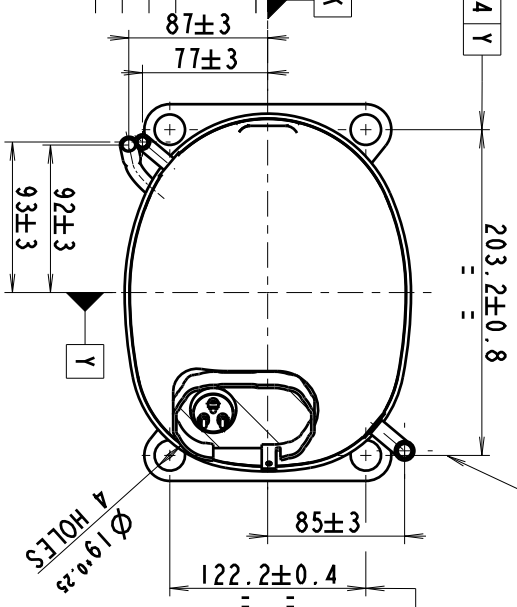
1:5

PROCESS "C"
(COPPER THICK. 1,52)

DISCHARGE "A"
(COPPER THICK. 1,52)

PLACE FOR INMETRO
COMPRESSOR LABEL
2.216.541

SUCTION "B"
(COPPER THICK. 1,52)



ECM	REVISION	LO	BY	APP	DATE	
517908	1	CHANGED PROCESS TUBE	TAB	LF	JK	15.06.2012
519422	2	STANDARDISATION OF N.J. BOTTOM SHELL.	VIEWS	PT	JK	04.07.2012
28918	3	ALL BOMS CORRECTION. F. E. FROM 94301 TO 94311.	TAB	PT	JK	06.05.2013
30537	4	ADDED INMETRO LABEL	C6	DG	M6	01.08.2013

MATERIAL :		A		B		C		SHELL TYPE		MODELS	
CODE :		1. D. 8,0-8,08 X 23 DEEP		1. D. 12,77-12,85 X 22 DEEP		1. D. 6,42-6,5 X 22 DEEP		943.01 143.01 947.01 147.01		NJ2192GK NJ2212GK NJ9233GK NJ9238GK NJ17238E NJ17240F NJ92332E NJ92382E NJ923326S NJ21926J	
DRAWN : PETER TEPLICA 16.12.2009		A		B		C		SHELL TYPE		MODELS	
APP. : JAN KAKALEJCIN		1. D. 8,0-8,08 X 23 DEEP		1. D. 12,77-12,85 X 22 DEEP		1. D. 6,42-6,5 X 22 DEEP		943.01 143.01 947.01 147.01		NJ2192GK NJ2212GK NJ9233GK NJ9238GK NJ17238E NJ17240F NJ92332E NJ92382E NJ923326S NJ21926J	
ECM : 514846		A		B		C		SHELL TYPE		MODELS	
NAME		embraço		embraço		embraço		embraço		embraço	
NJ EXTERNAL VIEW		embraço		embraço		embraço		embraço		embraço	
HIGH		embraço		embraço		embraço		embraço		embraço	
REPLACE		embraço		embraço		embraço		embraço		embraço	
No.		embraço		embraço		embraço		embraço		embraço	
1.960.838 REV.6		embraço		embraço		embraço		embraço		embraço	
1.960.838		embraço		embraço		embraço		embraço		embraço	

GEN. TOL. :
ANG. TOL. :
SCALE : 1:3
REPLACE

1.960.838 REV.6

1.960.838