



Model: NJ9226GK  
Code: 944LV19

**embraco** POWER IN.  
CHANGE ON

Type:	On-off
Voltage [V] / Frequency [Hz] / Phases	230 V 50 Hz 1 ~
Refrigerant:	R-404A
Application:	MBP

Motor type:	CSCR
Starting torque:	HST
HP:	1+
Displacement:	21.71 cm <sup>3</sup>

### OPERATING CONDITION

Evaporation Temp.	7.2 °C	Return Temp.	18.3 °C	Superheating	11.1 K
Condensing Temp.	54.4 °C	Liquid Temp.	54.4 °C	Subcooling	0.0 K

<b>Cooling capacity</b>	<b>Power consumption</b>	<b>Mass flow rate</b>	<b>Efficiency</b>
2,667.25 W	1,428.55 W	101.16 kg/h	1.87 W/W

### APPLICATION

Evaporating temperature range:	-20 to 0 °C	Cooling type:	Fan Cooling
Permanent operating temperature (peak) :	55 (60) °C	Air Flow	--
Expansion device:	Capillary tube or Expansion valve	Maximum motor temperature:	130 °C

### ELECTRICAL DATA

Start winding resistance at 25°C (77°F):	7.8 Ω +/- 8%	Run winding resistance at 25°C (77°F):	2.12 Ω +/- 8%
FLA - full load amperage L/MBP [A] 50 Hz / 60 Hz:	- / -	LRA (A) 50 Hz / 60 Hz:	27.5 / -
		FLA - full load amperage HBP [A] 50 Hz / 60 Hz:	- / -

### MECHANICAL DATA

Bore:	38.09 mm	Stroke:	9.53 mm
		Displacement:	21.71 cm <sup>3</sup>

### OTHER INFORMATION

Weight:	20.7 kg	Oil charge:	750 ml
Lubricant type:	Polyolester ISO22	Nitrogen charge:	Yes

### EXTERNAL SETTINGS

	Shape	Material	Diameter [mm]
Suction connector	ROTOLOCK(Ex. thr. 1-14UNS-2A)	Steel	12.70
Discharge connector	Slanted J	Copper	8.00
Process connector	Vertical	Copper	6.42
Base plate:	American Standard	Tray holder:	No

### PERFORMANCES AT STANDARD CHECK-POINTS

Checkpoint	Cooling capacity	Power consumption	Gas flow rate	Cooling Efficiency	Heating capacity +/-	Heating Efficiency
	+/-5%	+/-5%	+/-5%	+/- 7%	5% *	+/- 7%
	W	W	kg/h	W/W	W	W/W
EN12900 MBP	1,637.09	968.84	49.16	1.69	2,138.46	2.21

\* Calculations performed considering isentropic compression and a housing loss of 10%. This is an estimated heat amount discarded in the discharge pipe and the condenser combined.

**CONDENSING TEMP. 35 °C****(SUBCOOLING : 0 K, RETURN TEMP.: 32 °C)**

Evaporating temperature °C	Cooling capacity +/-5%	Power consumption +/-5%	Gas flow rate +/-5%	Cooling Efficiency +/- 7%	Heating capacity +/- 5% *	Heating Efficiency +/- 7%
	W	W	kg/h	W/W	W	W/W
-20.00	1,291.53	750.31	31.05	1.72	1,667.02	2.22
-15.00	1,653.33	818.95	39.99	2.02	2,075.25	2.53
-10.00	2,078.39	885.64	50.63	2.35	2,539.52	2.87
-5.00	2,572.96	946.56	63.22	2.72	3,063.36	3.24
0.00	3,144.80	997.30	78.04	3.15	3,651.84	3.66

**CONDENSING TEMP. 45 °C****(SUBCOOLING : 0 K, RETURN TEMP.: 32 °C)**

Evaporating temperature °C	Cooling capacity +/-5%	Power consumption +/-5%	Gas flow rate +/-5%	Cooling Efficiency +/- 7%	Heating capacity +/- 5% *	Heating Efficiency +/- 7%
	W	W	kg/h	W/W	W	W/W
-20.00	1,033.66	764.03	27.97	1.35	1,422.08	1.86
-15.00	1,341.86	849.51	36.56	1.58	1,791.35	2.11
-10.00	1,708.41	938.96	46.92	1.82	2,215.30	2.36
-5.00	2,137.30	1,028.73	59.27	2.08	2,694.63	2.62
0.00	2,634.16	1,114.98	73.88	2.36	3,232.06	2.90

**CONDENSING TEMP. 55 °C****(SUBCOOLING : 0 K, RETURN TEMP.: 32 °C)**

Evaporating temperature °C	Cooling capacity +/-5%	Power consumption +/-5%	Gas flow rate +/-5%	Cooling Efficiency +/- 7%	Heating capacity +/- 5% *	Heating Efficiency +/- 7%
	W	W	kg/h	W/W	W	W/W
-20.00	789.33	761.57	24.76	1.04	1,175.22	1.54
-15.00	1,035.05	857.21	32.73	1.21	1,491.37	1.74
-10.00	1,335.23	964.20	42.63	1.38	1,863.74	1.93
-5.00	1,690.86	1,078.37	54.59	1.57	2,288.59	2.12
0.00	2,104.93	1,196.01	68.85	1.76	2,765.24	2.31

**ELECTRICAL ACCESSORIES**

Kit:	1
Starter device:	VOLTAGE RELAY
Engineering code:	RVA4M3C-110
Run capacitor:	20
Starting capacitor:	88-108

Thermal protector: T0736/C9

Institutes approved for this electric kit:



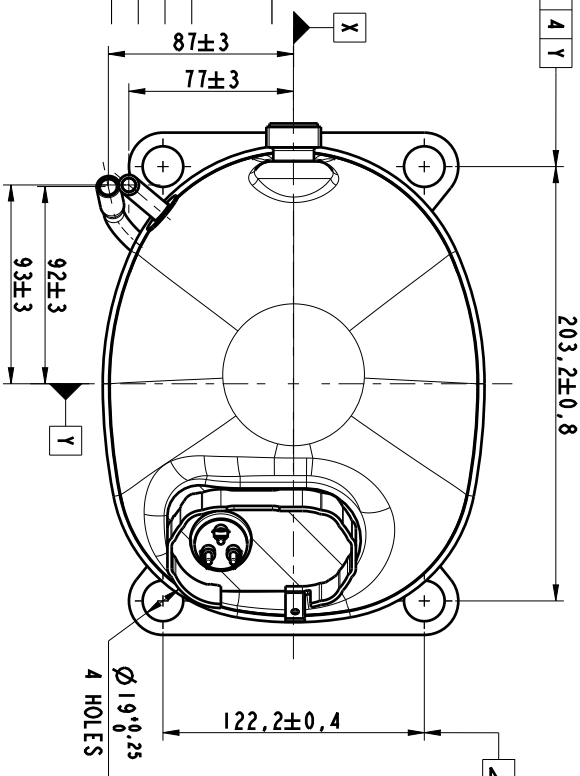
If purchased without electricals consult Embraco to verify the supplier of electricals approved for this compressor

**MECHANICAL ACCESSORIES**

Rubber damper: Yes

Metal bushing: Optional

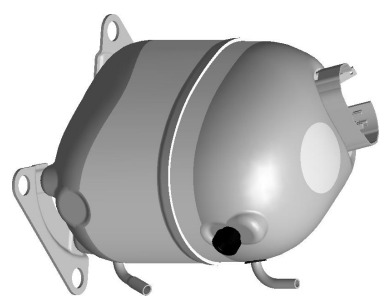
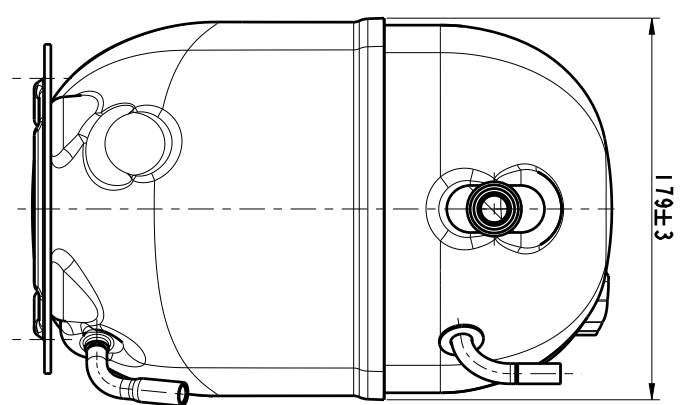
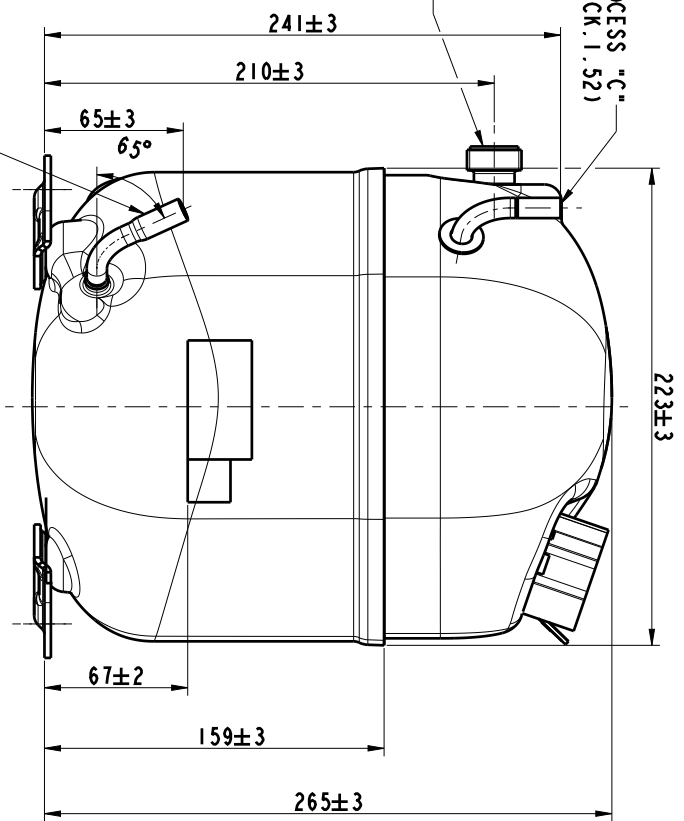
ECM	REVISION	LO	BY	APP	DATE
506537	1 FIRST RELEASE	--	PV	VP	01.08.2005
509163	2 CREATED 3 D MODEL OF 944.09 REDRAWN DRAWING	--	KJ	MB	23.01.2007
509446	3 ADDED MODEL NJ9226P TO THE TABLE	--	KJ	JK	23.04.2007
510239	4 ADDED MODEL NJ9226GS TO THE TABLE	--	KJ	PB	02.08.2007
511908	5 CHANGED PROCESS TUBE	TAB	LF	JK	15.06.2012
519422	6 STANDARDISATION OF NJ BOTTOM SHELL.	VIEWS	PT	JK	04.07.2012
28918	7 ALL BOMS CORRECTION. F. E. FROM 94409 TO 94419.	TAB	PT	JK	06.05.2013



4 Y

2 X

DISCHARGE "A"  
(COPPER THICK. 1.52)



1:5

MATERIAL :	A		C		SHELL TYPE	MODELS	
CODE :	A		C				
DRAWN : VALENO	01.08.2005						
APP. : P. VALENO	01.08.2005						
ECM :							
NAME		NJ EXTERNAL VIEW				GEN. TOL. :	
ROTLOCK MEDIUM						ANG. TOL. :	
						SCALE : 1:2,5	
						REPLACE	
						No.	
						1.960.888	

THIS MATERIAL IS SUPPLIED AND INSTALLED TO EMBRACO EXPORT AND MAY NOT BE REPRODUCED, DISCLOSED, DISTRIBUTED OR USED IN ANY MANNER WITHOUT THE PERMISSION OF EMBRACO.