



Model: NT6217Z
Code: 212BA04

embraco POWER IN.
CHANGE ON

Type:	On-off
Voltage [V] / Frequency [Hz] / Phases	220-240 V 50 Hz 1 ~
Refrigerant:	R-134a
Application:	HBP

Motor type:	
Starting torque:	HST
HP:	3/4
Displacement:	20.44 cm ³

OPERATING CONDITION : ARI HBP

Evaporation Temp.	7.2 °C	Return Temp.	18.3 °C	Superheating	11.1 K
Condensing Temp.	54.4 °C	Liquid Temp.	54.4 °C	Subcooling	0.0 K

Cooling capacity	Power consumption	Mass flow rate	Efficiency
1,727.55 W	760.01 W	46.25 kg/h	2.27 W/W

APPLICATION

Evaporating temperature range:	-15 to 10 °C	Cooling type:	Fan Cooling
Permanent operating temperature (peak) :	60 (70) °C	Air Flow	--
Expansion device:	Capillary tube or Expansion valve	Maximum motor temperature:	130 °C

ELECTRICAL DATA

Start winding resistance at 25°C (77°F):	11.22 Ω +/- 8%	Run winding resistance at 25°C (77°F):	3 Ω +/- 8%
FLA - full load amperage L/MBP [A] 50 Hz / 60 Hz:	4.89 / -	LRA (A) 50 Hz / 60 Hz:	25 / -
		FLA - full load amperage HBP [A] 50 Hz / 60 Hz:	- / -

MECHANICAL DATA

Bore:	36.99 mm	Stroke:	9.52 mm
		Displacement:	20.44 cm ³

OTHER INFORMATION

Weight:	17 kg	Oil charge:	450 ml
Lubricant type:	Polyolester ISO22	Nitrogen charge:	Yes

EXTERNAL SETTINGS

-	Shape	Material	Diameter [mm]
Suction connector	Vertical	Copper	9.60
Discharge connector	Vertical	Copper	6.42
Process connector	Vertical	Copper	6.42
Base plate:	Universal	Tray holder:	No

PERFORMANCES AT STANDARD CHECK-POINTS

Checkpoint	Cooling capacity	Power consumption	Gas flow rate	Cooling Efficiency	Heating capacity +/-	Heating Efficiency
	+/-5%	+/-5%	+/-5%	+/- 7%	5% *	+/- 7%
	W	W	kg/h	W/W	W	W/W
EN12900 HBP	1,705.58	701.62	42.78	2.43	2,060.78	2.94
EN12900 MBP	958.10	523.06	22.34	1.83	1,220.19	2.33

* Calculations performed considering isentropic compression and a housing loss of 10%. This is an estimated heat amount discarded in the discharge pipe and the condenser combined.

CONDENSING TEMP. 35 °C**(SUBCOOLING : 0 K, RETURN TEMP.: 32 °C)**

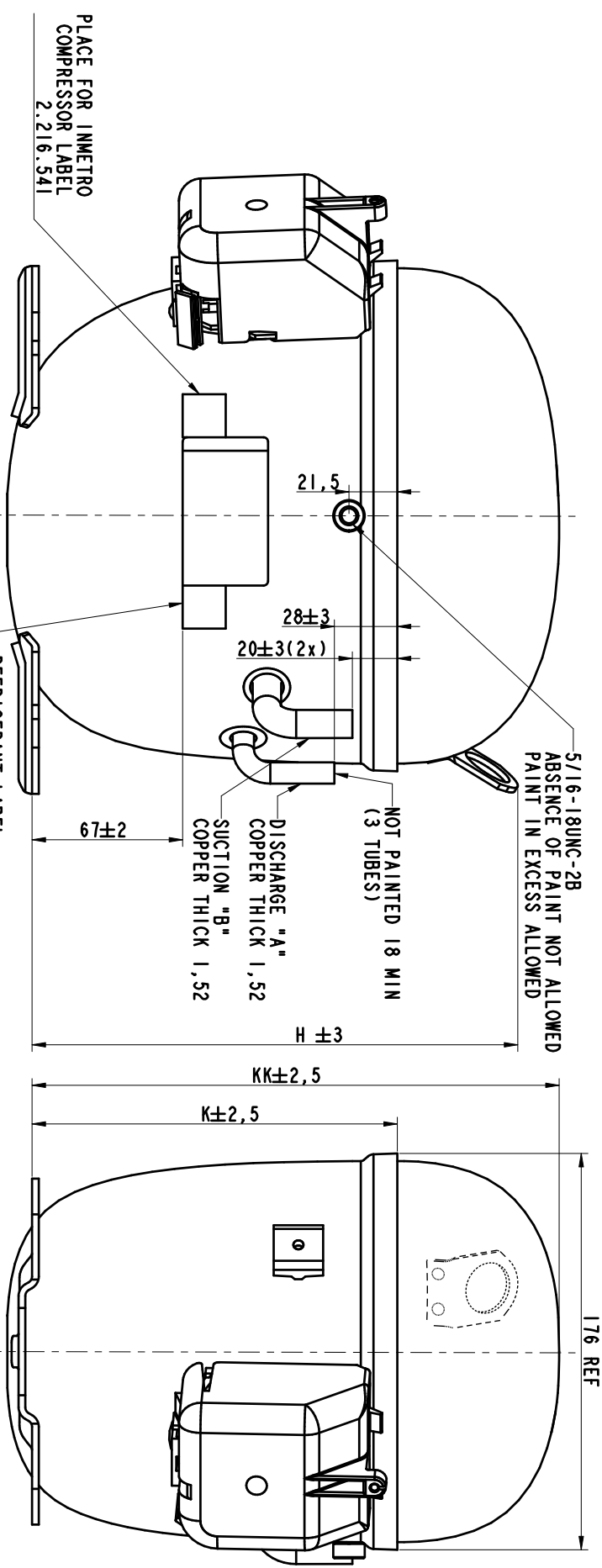
Evaporating temperature °C	Cooling capacity	Power consumption	Gas flow rate	Cooling Efficiency	Heating capacity +/-	Heating Efficiency
	+/-5%	+/-5%	+/-5%	+/- 7%	5% *	+/- 7%
	W	W	kg/h	W/W	W	W/W
-15.00	889.26	437.05	17.74	2.03	1,101.86	2.52
-10.00	1,121.58	471.72	22.46	2.38	1,354.47	2.87
-5.00	1,405.15	505.42	28.26	2.78	1,655.55	3.28
0.00	1,747.26	535.52	35.32	3.26	2,010.41	3.75
5.00	2,155.29	558.49	43.83	3.86	2,424.10	4.34
10.00	2,637.36	569.81	54.02	4.63	2,902.23	5.09

CONDENSING TEMP. 45 °C**(SUBCOOLING : 0 K, RETURN TEMP.: 32 °C)**

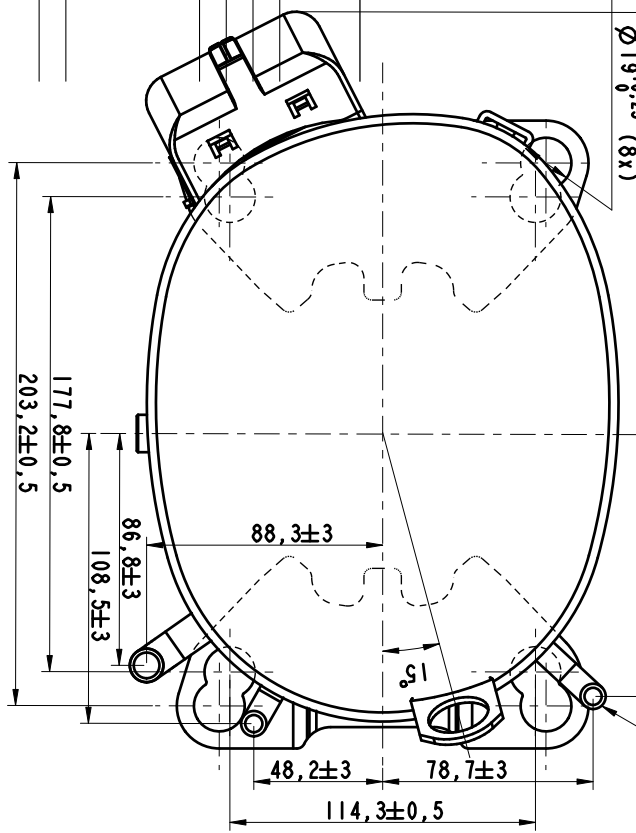
Evaporating temperature °C	Cooling capacity	Power consumption	Gas flow rate	Cooling Efficiency	Heating capacity +/-	Heating Efficiency
	+/-5%	+/-5%	+/-5%	+/- 7%	5% *	+/- 7%
	W	W	kg/h	W/W	W	W/W
-15.00	778.27	465.07	16.93	1.67	1,014.95	2.18
-10.00	981.08	508.91	21.43	1.93	1,244.97	2.45
-5.00	1,226.96	554.07	26.92	2.21	1,516.60	2.74
0.00	1,525.00	599.63	33.65	2.54	1,837.90	3.07
5.00	1,883.04	643.27	41.82	2.93	2,214.80	3.44
10.00	2,308.81	681.64	51.68	3.39	2,652.70	3.89

CONDENSING TEMP. 55 °C**(SUBCOOLING : 0 K, RETURN TEMP.: 32 °C)**

Evaporating temperature °C	Cooling capacity	Power consumption	Gas flow rate	Cooling Efficiency	Heating capacity +/-	Heating Efficiency
	+/-5%	+/-5%	+/-5%	+/- 7%	5% *	+/- 7%
	W	W	kg/h	W/W	W	W/W
-15.00	657.32	479.69	15.78	1.37	907.61	1.89
-10.00	842.13	535.92	20.30	1.57	1,129.40	2.11
-5.00	1,055.22	591.40	25.57	1.78	1,375.97	2.33
0.00	1,310.28	649.06	31.95	2.02	1,662.82	2.56
5.00	1,617.13	708.76	39.72	2.28	1,999.23	2.82
10.00	1,984.03	768.68	49.15	2.58	2,391.67	3.11



ECM	REVISION	LO	BY	APP	DATE
516508	7	ADDED 92224, NT62176KV	--	BS AP	09.11.2010
516082	8	ADDED 84204, NT6220U, NT6222U	--	ZF AP	12.01.2011
515556	9	ADDED NT62246K	--	BS AP	14.01.2011
517385	10	PROCESS TUBE CHANGED	TAB	LF JK	13.05.2011
519045	11	ADDED SHELL TYPE 843.04 FOR NT2180U	TAB	DG JK	16.03.2012
519386	12	ADDED NT6224U	TAB	LF JK	23.05.2012
30557	13	ADDED INMETRO LABEL	CG	DG MG	31.07.2013
34220	14	ADDED MODEL NT6217UV	TAB	LF MG	06.06.2014
35574	15	ADDED MODEL NT6224UV	TAB	LF MG	08.10.2014



234	162.5	216	1. D. 6.42-6.5	1. D. 9.6-9.67	1. D. 6.42-6.5	923.04	NT21926K	NT21806K
220	148.5	202	X23 DEEP	X22 DEEP	X23 DEEP	923.14	NT21926KV	NT2180U
207	135.5	189				843.04		
MATERIAL :			A			SHELLTYPE		
CODE :			B			MODELS		
DRAWN : P. VALERO 01.04.2005			C			211.04		
APP. : VALERO 01.04.2005			embraco			NT62152		
ECM :			NT EXTERNAL VIEW			ANG. TOL. :		
			CSR PIN FUSITE			SCALE : 1:2		
						REPLACE		
						No. 1.960.879		

THIS MATERIAL IS SPECIFICALLY AND EXCLUSIVELY TO EMBRACO EQUIPMENTS AND MUST NOT BE REPRODUCED, REPRODUCED, REPRODUCED OR USED IN ANY MANNER WITHOUT THE WRITTEN PERMISSION.