



## Compressor hermetic scroll Panasonic C-SCN603H8H

### Panasonic

### Data sheet

---

Voltage	380/415 V   50/60 hz   3 ph
Horse power	8 CV
Displacement cm <sup>3</sup>	137.00 cm <sup>3</sup>
Cooling capacity at ARI conditions, R407C	24.50 kW
Cooling capacity at Refrigeration conditions, R404A	18.49 kW
Cooling capacity at ARI conditions, R134a	16.70 kW

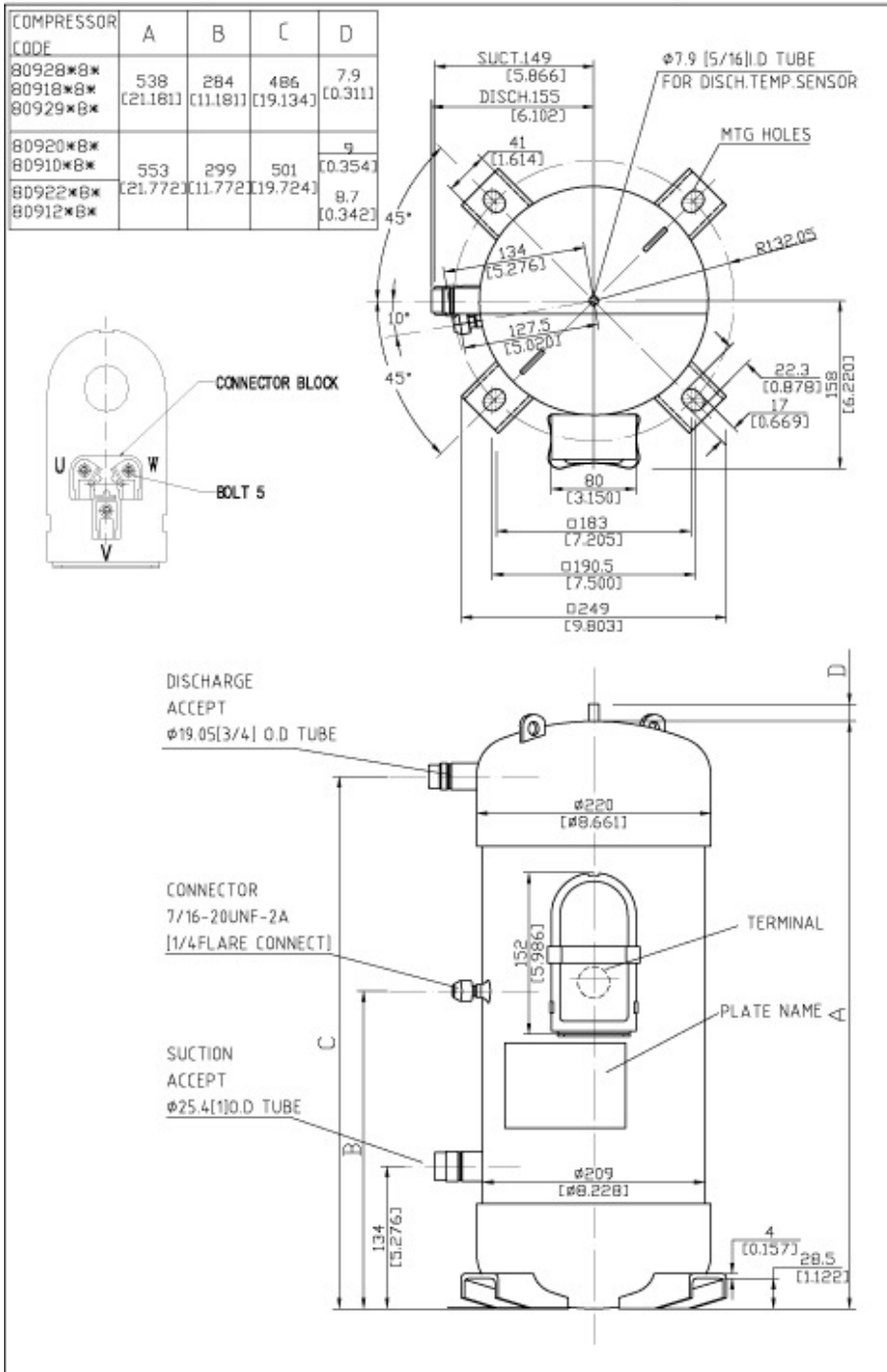
Refrigerant	R407C, R404A, R134a, R407F
Suction pipe	1 inch
Discharge pipe	3/4 inch
Weight	66.50 Kg
Current	15.90 A
Start-up intensity (rotor blocked)	80 A
Maximum service intensity	22.20 A
Type of oil	FV68S
Recharge oil	2600 cc
Text	380/415-3-50 (460/440-3-60) Disponible en versión tandem
Sound level	70 dB
Temperature	Medium/high
Ambient temperature	35 °C
Technologies	Fixed speed
Heat pump	No
Maximum shell bottom temperature	90 °C
Maximum discharge temperature	115 °C
Maximum winding temperature	115 °C
Type of motor cooling	Natural
Type of refrigerant	R407C, R404A, R134a
Motor type	3-PH Induction Motor
Motor protection type	Interno
Speed	2900 rpm
Low pressure design	1.60 M Pa
High pressure design	3.2 M Pa

▼ [View more information](#)

# Documentation

C-SCN603H8H\_dibujo.gif 28.84KB (/files/C-SCN603H8H\_dibujo.gif)

## DIMENSIONAL SKETCH



wiringdiagramc-sc-3ph\_290813\_1377790336\_81\_.jpg 141.67KB (/files/wiringdiagramc-sc-3ph\_290813\_1377790336\_81\_.jpg)

