



# stud clip

Unique ratchet design ensures quick installation and adjustment.



Channel



Rod




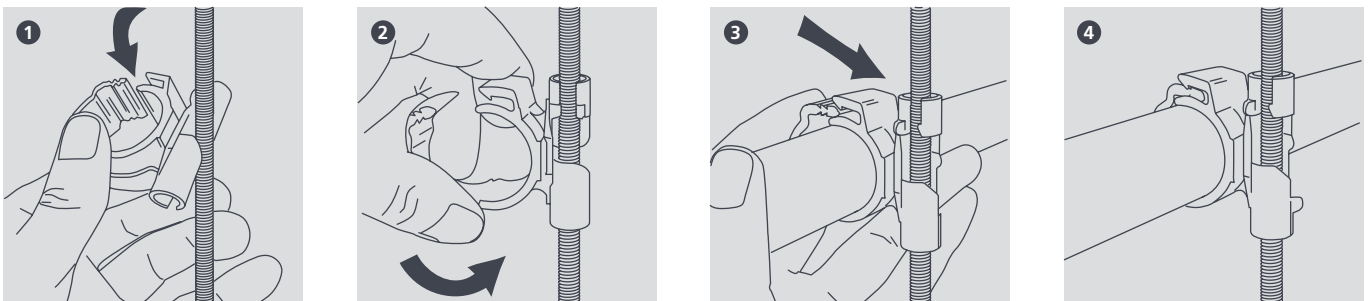
Surface

### KEY FEATURES

- Available for M8 and M10 studding
- Fast fixing direct to studding
- Simple to install, adjust and relocate
- Fits metric and imperial pipe sizes

| SPECIFICATIONS              |       | SIZING OPTIONS |           |                          |                              | M8        |          | M10      |          |    |
|-----------------------------|-------|----------------|-----------|--------------------------|------------------------------|-----------|----------|----------|----------|----|
| Materials of construction   | Nylon | Size           | 6mm       | Lagging<br>9mm 13mm 19mm |                              | Part No.  | Pack Qty | Part No. | Pack Qty |    |
| Max. temp                   | 70°C  | 1/4"           |           |                          |                              | B6800     | 10       | B6814    | 10       |    |
| Max. rec. distance per clip | 1.2m  | 3/8"           |           |                          |                              | B6802     | 10       | B6816    | 10       |    |
|                             |       | 1/2"           |           |                          |                              | B6801     | 10       | B6815    | 10       |    |
|                             |       | 5/8"           |           |                          |                              | B6803     | 10       | B6817    | 10       |    |
|                             |       | 3/4"           | 1/4"      |                          |                              | B6804     | 10       | B6818    | 10       |    |
|                             |       | 7/8"           | 3/8"      |                          |                              | B6805     | 10       | B6819    | 10       |    |
|                             |       | 1"             | 1/2"      | 1/4"                     |                              | B6806     | 10       | B6820    | 10       |    |
|                             |       | 1 1/8"         | 5/8"      | 3/8"                     |                              | B6807     | 10       | B6821    | 10       |    |
|                             |       | 1 1/4"         | 3/4" 7/8" | 1/2" 5/8"                |                              | B6808     | 10       | B6822    | 10       |    |
|                             |       | 1 3/8"         |           | 3/4"                     | 3/8" 1/2"                    | B6809     | 10       | B6823    | 10       |    |
|                             |       | 1 1/2"         | 1 1/8"    | 7/8"                     | 5/8"                         | B6810     | 10       | B6824    | 10       |    |
|                             |       | 1 5/8"         | 1 3/8"    | 1 1/8"                   | 3/4" 7/8"                    | 1/4" 3/8" | B6811    | 10       | B6825    | 10 |
|                             |       | 2"             |           |                          | 1/2"                         | B6812     | 10       | B6826    | 10       |    |
|                             |       | 2 1/8"         | 1 5/8"    | 1 3/8" 1 5/8"            | 1 1/8" 1 3/8" 5/8" 3/4" 7/8" | B6813     | 10       | B6827    | 10       |    |

 For further details please refer to our website [aspenpumps.com/xtra](http://aspenpumps.com/xtra)



Information correct at time of going to press.