

**ENGINEERING CODE**  
559FA8204AA

**APPROVED REFRIGERANT**  
R452A

**POWER SUPPLY**  
220 - 240V 50Hz ~

**STANDARD CONDITIONS**  
EN13215\_SH10

**APPLICATION**  
LBP

**COOLING CAPACITY**  
279 W

**EFFICIENCY**  
0.57 W/W

DATA

### General Data

Weight	23.8 Kg
Receiver	1.1 L
Height	296 mm
Lenght	499 mm
Width	340 mm
Power Supply	220 - 240 V 50 Hz

### Electrical Data

Motor Type	CSR
Locked Rotor Amperage (LRA)	18.5 A
Max Current	4.17 A

### Components

Valve Suction	FLARE 3/8"	2110059
Valve Discharge	FLARE 1/4"	2110085
Condenser	4R11T	2451217
Fan Kit	16W 254/28/5B	1996609
Compressor	NEK2168GK	959HA51...AM
Electrical Kit	ELKOM NEK2168GK	959HA5190A

## Noise Data

Sound Power Level	64.2 dB (A)	-	-
Sound Pressure Level	at 1 m	at 5 m	at 10 m
	56.19551132 dB (A)	42.21611123 dB (A)	36.19551132 dB (A)

## Fan Motor

Number	1
Shaft Power	16 W
Air Flow	460 m <sup>3</sup> /h
Blade diameter	254 mm

### PERFORMANCE

## Rated Points

Ambient Temperature	Cooling Capacity	Power Consumption	Current	Efficiency
32.00°C	279 W	489 W	4.01 A	0.57 W/W

Test Condition: EN13215\_SH10, Return Gas 0 °C, Subcooling OK , Evaporation -35.00°C, Condensing 0 °C, Ambient 32.00°C

## Performance Curve Data

Ambient Temperature 25°C

Evaporating Temperature °C	Cooling Capacity W	Power Consumption W	Current A	Efficiency W/W
-40	250	416	3.84	0.6
-35	350	478	3.95	0.73
-30	470	540	4.09	0.87
-25	613	607	4.27	1.01
-20	777	682	4.51	1.14
-15	964	769	4.84	1.25
-10	1173	871	5.25	1.35

Test Condition: EN13215\_SH10, LBP

### Ambient Temperature 32°C

Evaporating Temperature °C	Cooling Capacity W	Power Consumption W	Current A	Efficiency W/W
-40	186	432	3.91	0.43
-35	279	489	4.01	0.57
-30	395	549	4.14	0.72
-25	534	616	4.32	0.87
-20	697	692	4.57	1.01
-15	884	782	4.9	1.13
-10	1095	889	5.32	1.23

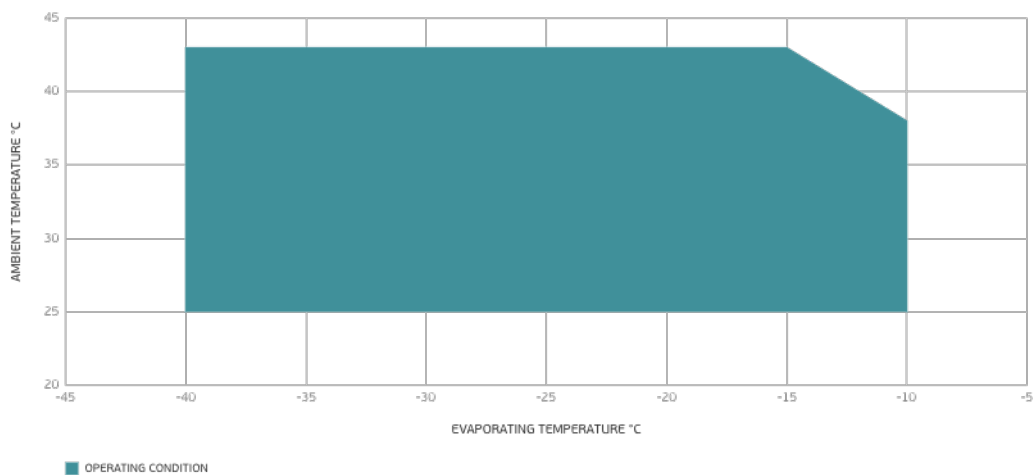
Test Condition: EN13215\_SH10, LBP

### Ambient Temperature 43°C

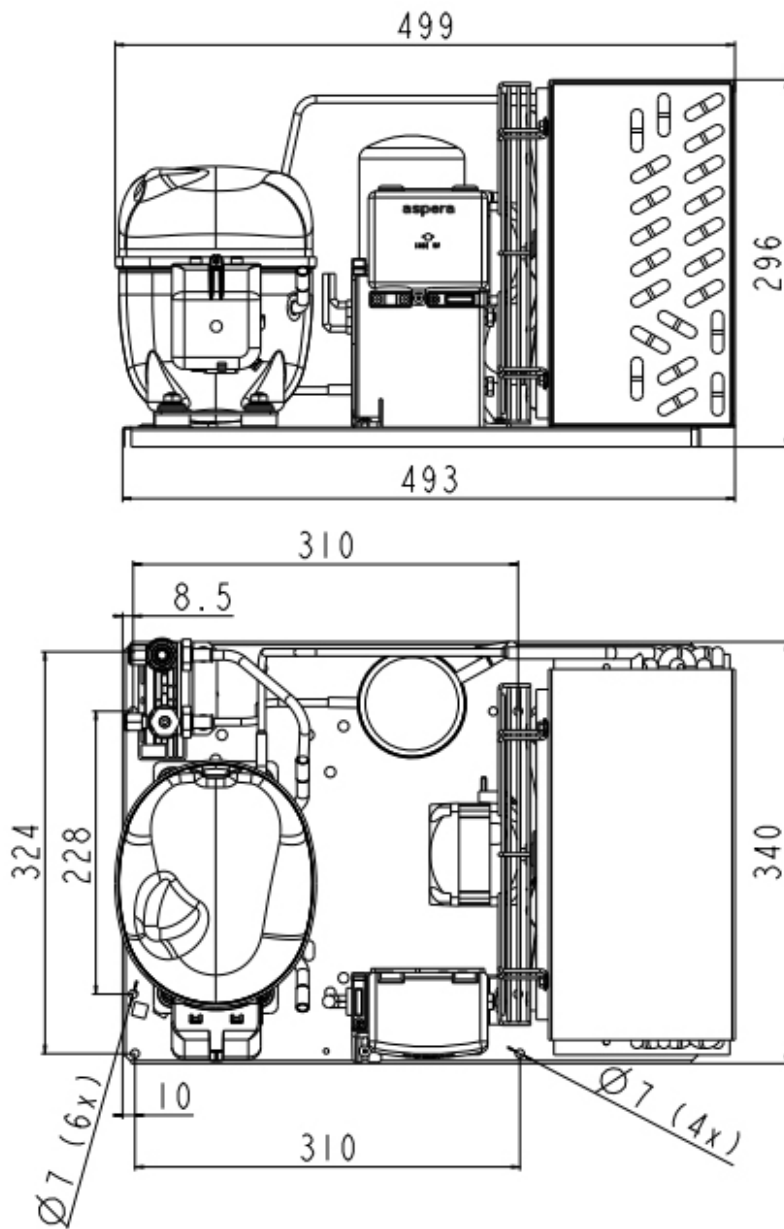
Evaporating Temperature °C	Cooling Capacity W	Power Consumption W	Current A	Efficiency W/W
-40	170	452	4.14	0.38
-35	222	510	4.25	0.44
-30	299	574	4.39	0.52
-25	402	647	4.59	0.62
-20	531	733	4.85	0.72
-15	687	835	5.21	0.82
-10	869	957	5.66	0.91

Test Condition: EN13215\_SH10, LBP

### Operating Envelope



## External Dimensions



## Wiring Diagram

