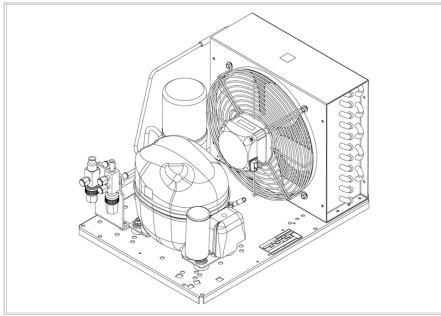


MODEL

UNEK6213GK

embraco



CE

ENGINEERING CODE
659BA8212AA

APPROVED REFRIGERANT
R449A

POWER SUPPLY
220 - 240V 50Hz ~

STANDARD CONDITIONS
EN13215_SH10

APPLICATION
M/HBP

COOLING CAPACITY
790 W

EFFICIENCY
1.28 W/W

DATA

General Data

Weight	22.6 Kg
Receiver	1.1 L
Height	296 mm
Length	465 mm
Width	340 mm
Power Supply	220 - 240 V 50 Hz

Electrical Data

Motor Type	CSIR
Locked Rotor Amperage (LRA)	19.3 A
Max Current	5.97 A

Components

Condenser	3R11T	2451206
Fan Kit	16W 254/28/5B	1996579
Valve Suction	FLARE 3/8"	2110059
Valve Discharge	FLARE 1/4"	2110085
Compressor	NEK6213GK	959BA51..AN
Electrical Kit	ELKOM NEK6213GK	959BA51N1A

Noise Data

Sound Power Level	65.64 dB (A)	-	-
Sound Pressure Level	at 1 m	at 5 m	at 10 m
	57.63575881 dB (A)	43.65635873 dB (A)	37.63575881 dB (A)

Fan Motor

Number	1
Shaft Power	16 W
Air Flow	595 m ³ /h
Blade diameter	254 mm

PERFORMANCE

Rated Points

Ambient Temperature	Cooling Capacity	Power Consumption	Current	Efficiency
32.00°C	790 W	615 W	3.87 A	1.28 W/W

Test Condition: EN13215_SH10, Return Gas 0 °C, Subcooling OK , Evaporation -10.00°C, Condensing 0 °C, Ambient 32.00°C

Performance Curve Data

Ambient Temperature 25°C

Evaporating Temperature °C	Cooling Capacity W	Power Consumption W	Current A	Efficiency W/W
-20	532	490	3.35	1.09
-15	691	542	3.53	1.28
-10	864	600	3.74	1.44
-5	1054	664	3.98	1.59
0	1265	734	4.25	1.72
5	1505	812	4.57	1.85
10	1775	896	4.92	1.98

Test Condition: EN13215_SH10, M/HBP

Ambient Temperature 32°C

Evaporating Temperature °C	Cooling Capacity W	Power Consumption W	Current A	Efficiency W/W
-20	475	506	3.51	0.94
-15	628	557	3.67	1.13
-10	790	615	3.87	1.28
-5	966	682	4.11	1.42
0	1161	757	4.39	1.53
5	1380	841	4.73	1.64
10	1627	935	5.12	1.74

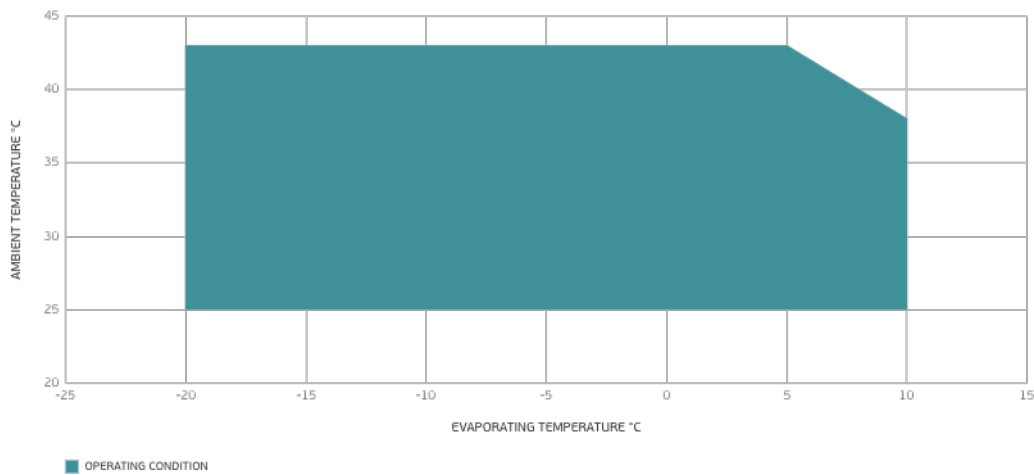
Test Condition: EN13215_SH10, M/HBP

Ambient Temperature 43°C

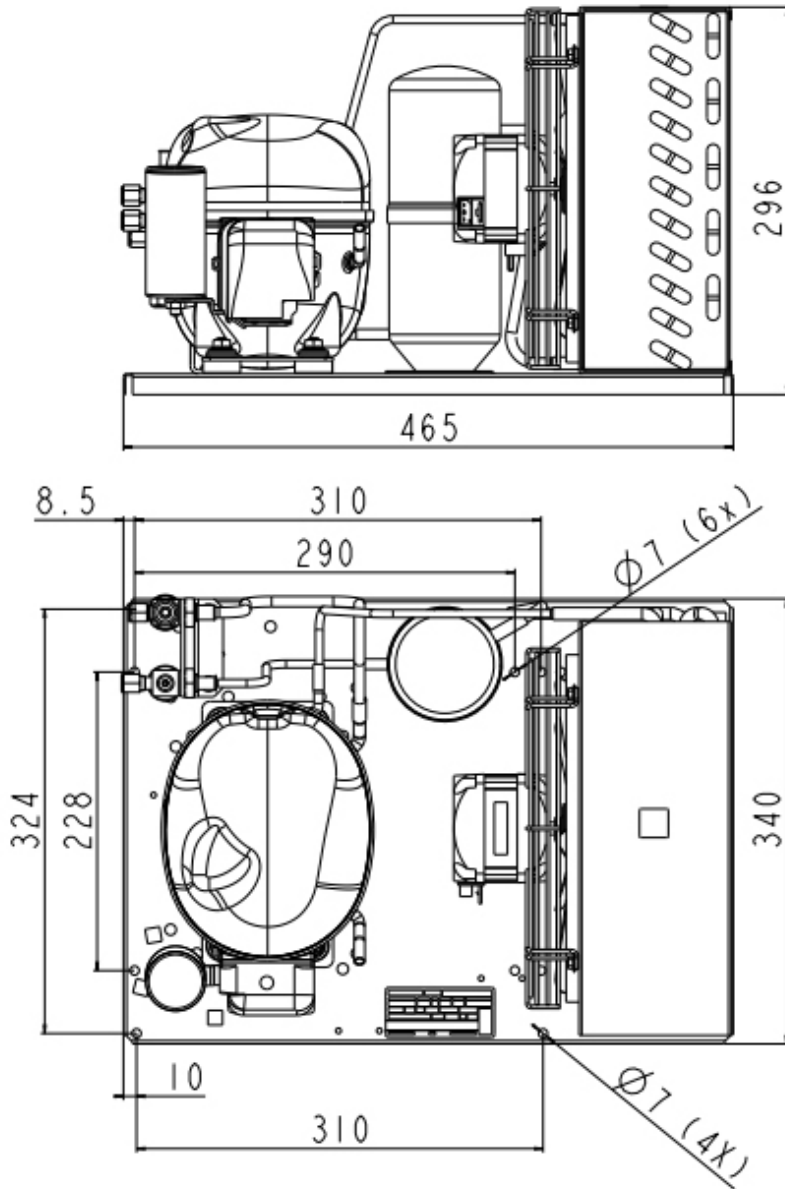
Evaporating Temperature °C	Cooling Capacity W	Power Consumption W	Current A	Efficiency W/W
-20	364	537	3.55	0.68
-15	499	592	3.75	0.84
-10	640	659	4.01	0.97
-5	789	737	4.32	1.07
0	953	828	4.7	1.15
5	1135	931	5.13	1.22
10	1341	1046	5.64	1.28

Test Condition: EN13215_SH10, M/HBP

Operating Envelope



External Dimensions



Wiring Diagram

